

Datasheet for ABIN3030688  
**anti-CYP2F1 antibody (AA 395-424)**[Go to Product page](#)

## 2 Images

## Overview

Quantity:	0.4 mL
Target:	CYP2F1
Binding Specificity:	AA 395-424
Reactivity:	Human
Host:	Rabbit
Clonality:	Polyclonal
Conjugate:	This CYP2F1 antibody is un-conjugated
Application:	Western Blotting (WB)

## Product Details

Immunogen:	A portion of amino acids 395-424 from the human protein was used as the immunogen for this CYP2F1 antibody.
Isotype:	Ig Fraction
Cross-Reactivity (Details):	Expected species reactivity: Rat
Purification:	Purified

## Target Details

Target:	CYP2F1
Alternative Name:	CYP2F1 ( <a href="#">CYP2F1 Products</a> )
Background:	CYP2F1 is a member of the cytochrome P450 superfamily of enzymes. The cytochrome P450

## Target Details

proteins are monooxygenases which catalyze many reactions involved in drug metabolism and synthesis of cholesterol, steroids and other lipids. This protein localizes to the endoplasmic reticulum and is known to dehydrogenate 3-methylindole, an endogenous toxin derived from the fermentation of tryptophan, as well as xenobiotic substrates such as naphthalene and ethoxycoumarin.

UniProt: [P24903](#)

## Application Details

Application Notes: Titration of the CYP2F1 antibody may be required due to differences in protocols and secondary/substrate sensitivity.\. Western blot: 1:1000

Restrictions: For Research Use only

## Handling

Format: Liquid

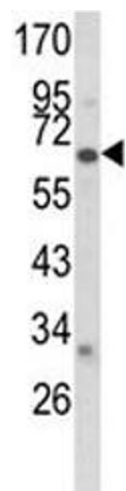
Buffer: In 1X PBS, pH 7.4, with 0.09 % sodium azide

Preservative: Sodium azide

Precaution of Use: This product contains Sodium azide: a POISONOUS AND HAZARDOUS SUBSTANCE which should be handled by trained staff only.

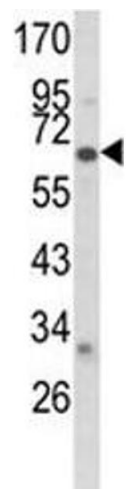
Storage: -20 °C

Storage Comment: Aliquot the CYP2F1 antibody and store frozen at -20°C or colder. Avoid repeated freeze-thaw cycles.



Western Blotting

**Image 1.** Western blot analysis of CYP2F1 antibody and A2058 lysate.



Western Blotting

**Image 2.** Western blot analysis of CYP2F1 antibody and A2058 lysate.