

Datasheet for ABIN3030691
anti-CYP26A1 antibody (AA 467-497)[Go to Product page](#)

5 Images

Overview

Quantity:	0.4 mL
Target:	CYP26A1
Binding Specificity:	AA 467-497
Reactivity:	Human, Mouse
Host:	Rabbit
Clonality:	Polyclonal
Conjugate:	This CYP26A1 antibody is un-conjugated
Application:	Western Blotting (WB), ELISA, Immunohistochemistry (IHC), Flow Cytometry (FACS)

Product Details

Immunogen:	A portion of amino acids 467-497 from the human protein was used as the immunogen for this CYP26A1 antibody.
Isotype:	Ig Fraction
Purification:	Purified

Target Details

Target:	CYP26A1
Alternative Name:	CYP26A1 (CYP26A1 Products)
Background:	CYP26A1 is a member of the cytochrome P450 superfamily of enzymes. The cytochrome P450 proteins are monooxygenases which catalyze many reactions involved in drug metabolism and synthesis of cholesterol, steroids and other lipids. This endoplasmic reticulum protein acts on

Target Details

retinoids, including all-trans-retinoic acid (RA), with both 4-hydroxylation and 18-hydroxylation activities. This enzyme regulates the cellular level of retinoic acid which is involved in regulation of gene expression in both embryonic and adult tissues.

UniProt: [O43174](#)

Pathways: [Retinoic Acid Receptor Signaling Pathway](#), [Monocarboxylic Acid Catabolic Process](#)

Application Details

Application Notes: Titration of the CYP26A1 antibody may be required due to differences in protocols and secondary/substrate sensitivity.\. Western blot: 1:1000,IHC (Paraffin): 1:50-1:100,Flow Cytometry: 1:10-1:50

Restrictions: For Research Use only

Handling

Format: Liquid

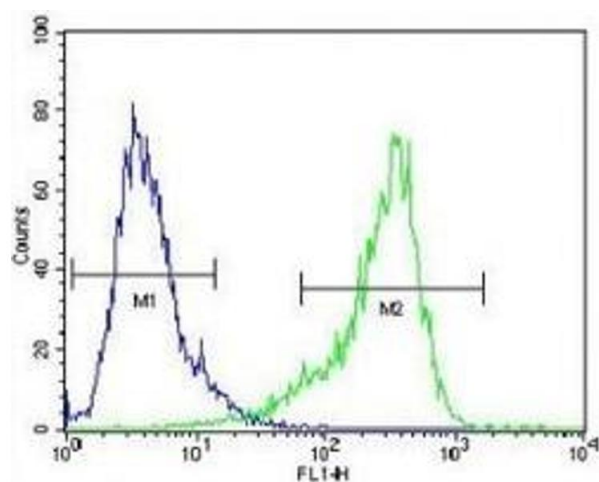
Buffer: In 1X PBS pH 7.4 with 0.09 % sodium azide

Preservative: Sodium azide

Precaution of Use: This product contains Sodium azide: a POISONOUS AND HAZARDOUS SUBSTANCE which should be handled by trained staff only.

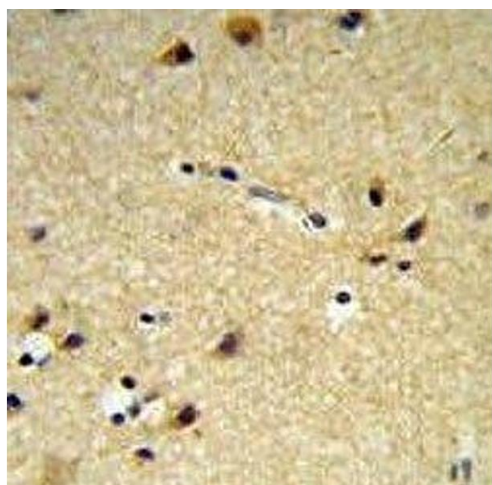
Storage: -20 °C

Storage Comment: Aliquot the CYP26A1 antibody and store frozen at -20°C or colder. Avoid repeated freeze-thaw cycles.



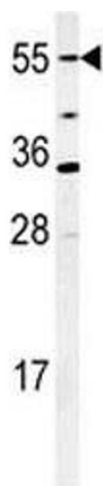
Flow Cytometry

Image 1. CYP26A1 antibody flow cytometric analysis of NIH3T3 cells (green) compared to a negative control cell (blue). FITC-conjugated goat-anti-rabbit secondary Ab was used for the analysis.



Immunohistochemistry

Image 2. CYP26A1 antibody IHC analysis in formalin fixed and paraffin embedded brain tissue.



Western Blotting

Image 3. Western blot analysis of CYP26A1 antibody and mouse NIH3T3 cell lysate.

Please check the [product details page](#) for more images. Overall 5 images are available for ABIN3030691.