

Datasheet for ABIN3030711
anti-DLL3 antibody (AA 599-618)[Go to Product page](#)

2 Images

Overview

Quantity:	100 µg
Target:	DLL3
Binding Specificity:	AA 599-618
Reactivity:	Human
Host:	Rabbit
Clonality:	Polyclonal
Conjugate:	This DLL3 antibody is un-conjugated
Application:	Western Blotting (WB)

Product Details

Immunogen:	Amino acids 599-618 (RAGQRQHLLFPYPSSILSVK-human) were used as the immunogen for this DLL3 antibody.
Isotype:	IgG
Purification:	Antigen affinity

Target Details

Target:	DLL3
Alternative Name:	DLL3 (DLL3 Products)
Background:	Delta-like 3 is a protein which in humans is encoded by the DLL3 gene. This gene encodes a member of the delta protein ligand family. This family functions as Notch ligands that are characterized by a DSL domain, EGF repeats, and a transmembrane domain. Mutation in the

Target Details

mouse delta-like 3 gene, which is homologous to the Notch-ligand delta in *Drosophila*, results in the mouse 'pudgy' phenotype. The human gene was identified within a critical interval, mapped in two consanguineous Arab-Israeli and Pakistani SCDO1 pedigrees, of 7.8 cM at 19q13.1-q13.3 between D19S570 and D19S908 (Bulman et al., 2000). Dunwoodie et al. (1997) presented results suggesting that mouse DLL3 may complement the function of other delta homologs during early pattern formation in the mouse embryo. In humans, the fact that mutations in genes required for oscillation, such as DLL3, result in abnormal segmentation of the vertebral column suggests that the segmentation clock also acts during human embryonic development. This residue is highly conserved in Delta proteins from *Drosophila* to humans, and the substitution of a charged polar for a nonpolar residue may disrupt the conformation of the DLL3 protein.

UniProt: [Q9NYJ7](#)

Pathways: [Notch Signaling](#)

Application Details

Application Notes: The stated application concentrations are suggested starting amounts. Titration of the DLL3 antibody may be required due to differences in protocols and secondary/substrate sensitivity.\.
Western blot: 0.5-1 µg/mL

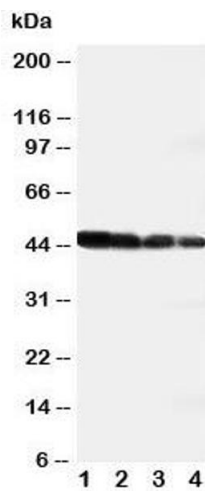
Restrictions: For Research Use only

Handling

Buffer: 0.5 mg/mL if reconstituted with 0.2 mL sterile DI water

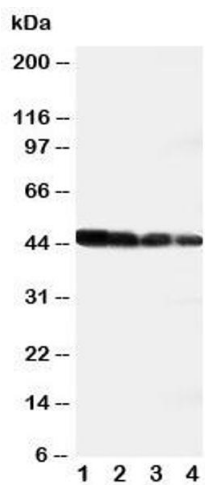
Storage: -20 °C

Storage Comment: After reconstitution, the DLL3 antibody can be stored for up to one month at 4°C. For long-term, aliquot and store at -20°C. Avoid repeated freezing and thawing.



Western Blotting

Image 1. Western blot testing of DLL3 antibody and recombinant human protein; Lane 1: 10ng; 2: 5ng; 3: 2.5ng; 4: 1.25ng



Western Blotting

Image 2. Western blot testing of DLL3 antibody and recombinant human protein