

Datasheet for ABIN3030730  
**anti-DLD antibody (C-Term)**



[Go to Product page](#)

5 Images

## Overview

Quantity:	100 µg
Target:	DLD
Binding Specificity:	C-Term
Reactivity:	Human, Mouse, Rat
Host:	Rabbit
Clonality:	Polyclonal
Conjugate:	This DLD antibody is un-conjugated
Application:	Western Blotting (WB), Immunocytochemistry (ICC), Immunohistochemistry (Paraffin-embedded Sections) (IHC (p)), Immunohistochemistry (Frozen Sections) (IHC (fro))

## Product Details

Immunogen:	An amino acid sequence from the C-terminus of human Lipoamide Dehydrogenase (EAFREANLAASFGKSINF) was used as the immunogen for this Lipoamide Dehydrogenase antibody.
Isotype:	IgG
Purification:	Antigen affinity

## Target Details

Target:	DLD
Alternative Name:	Lipoamide Dehydrogenase ( <a href="#">DLD Products</a> )
Background:	DLD, Dihydrolipoamide dehydrogenase, is a component of the pyruvate dehydrogenase

## Target Details

---

complex, the alpha-ketoglutarate dehydrogenase complex, and the branched-chain alpha-keto acid dehydrogenase complex(BCKD). DLD is a flavoprotein enzyme that degrades lipoamide, and produces dihydrolipoamide. The DLD gene contains 14 exons. The gene is localized to 7q31-q32. This gene encodes the L protein of the mitochondrial glycine cleavage system. The L protein, also named dihydrolipoamide dehydrogenase, is also a component of the pyruvate dehydrogenase complex, the alpha-ketoglutarate dehydrogenase complex, and the branched-chain alpha-keto acid dehydrogenase complex.

UniProt: [P09622](#)

Pathways: [Ribonucleoside Biosynthetic Process, Cell RedoxHomeostasis](#)

## Application Details

---

Application Notes: The stated application concentrations are suggested starting amounts. Titration of the Lipoamide Dehydrogenase antibody may be required due to differences in protocols and secondary/substrate sensitivity. \. Western blot: 0.5-1 µg/mL,IHC (Paraffin): 0.5-1 µg/mL,IHC (Frozen): 0.5-1 µg/mL,Immunocytochemistry: 0.5-1 µg/mL

Restrictions: For Research Use only

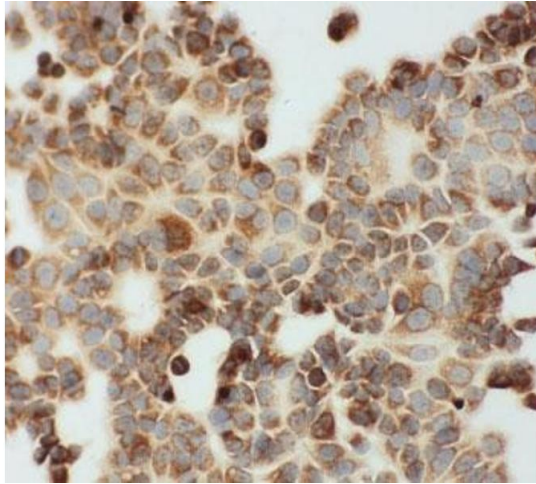
## Handling

---

Buffer: 0.5 mg/mL if reconstituted with 0.2 mL sterile DI water

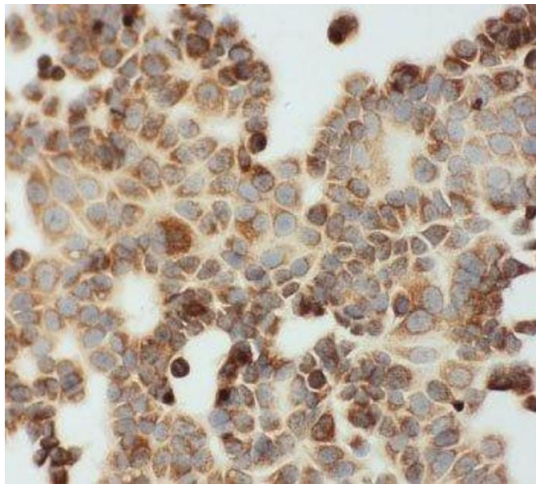
Storage: -20 °C

Storage Comment: After reconstitution, the Lipoamide Dehydrogenase antibody can be stored for up to one month at 4°C. For long-term, aliquot and store at -20°C. Avoid repeated freezing and thawing.



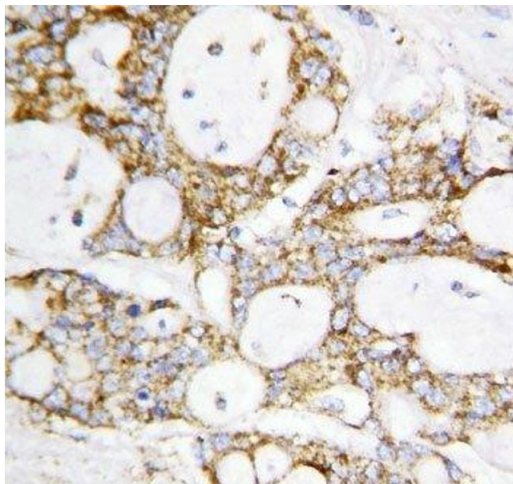
#### Immunocytochemistry

**Image 1.** ICC testing of MCF-7 cells



#### Immunocytochemistry

**Image 2.** ICC testing of MCF-7 cells



#### Immunohistochemistry

**Image 3.** IHC-P: Lipoamide Dehydrogenase antibody testing of human breast cancer tissue

Please check the [product details page](#) for more images. Overall 5 images are available for ABIN3030730.