



Datasheet for ABIN3030732
anti-DDR1 antibody (AA 396-430)



[Go to Product page](#)

3 Images

Overview

Quantity:	0.4 mL
Target:	DDR1
Binding Specificity:	AA 396-430
Reactivity:	Human, Mouse
Host:	Rabbit
Clonality:	Polyclonal
Conjugate:	This DDR1 antibody is un-conjugated
Application:	Western Blotting (WB), ELISA

Product Details

Immunogen:	This DDR1 antibody was produced from a rabbit immunized with a KLH conjugated synthetic peptide between 396-430 amino acids from the central region of human mouse Ddr1.
Isotype:	Ig Fraction
Cross-Reactivity (Details):	Expected species reactivity: Rat
Purification:	Antigen affinity purified

Target Details

Target:	DDR1
Alternative Name:	DDR1 (DDR1 Products)
Background:	Tyrosine kinase that functions as cell surface receptor for fibrillar collagen and regulates cell

Target Details

attachment to the extracellular matrix, remodeling of the extracellular matrix, cell migration, differentiation, survival and cell proliferation. Collagen binding triggers a signaling pathway that involves SRC and leads to the activation of MAP kinases. Regulates remodeling of the extracellular matrix by up-regulation of the matrix metalloproteinases MMP2, MMP7 and MMP9, and thereby facilitates cell migration and wound healing, but also tumor cell invasion. Promotes smooth muscle cell migration, and thereby contributes to arterial wound healing. Phosphorylates PTPN11 (By similarity). Required for normal blastocyst implantation during pregnancy, for normal mammary gland differentiation and normal lactation. Required for normal ear morphology and normal hearing.

UniProt: [Q03146](#)

Pathways: [RTK Signaling, Smooth Muscle Cell Migration](#)

Application Details

Application Notes: Titration of the DDR1 antibody may be required due to differences in protocols and secondary/substrate sensitivity.\. Western blot: 1:500-1000

Restrictions: For Research Use only

Handling

Format: Liquid

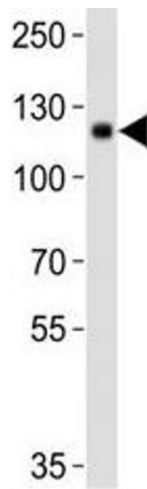
Buffer: In 1X PBS, pH 7.4, with 0.09 % sodium azide

Preservative: Sodium azide

Precaution of Use: This product contains Sodium azide: a POISONOUS AND HAZARDOUS SUBSTANCE which should be handled by trained staff only.

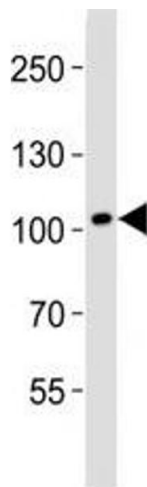
Storage: -20 °C

Storage Comment: Aliquot the DDR1 antibody and store frozen at -20°C or colder. Avoid repeated freeze-thaw cycles.



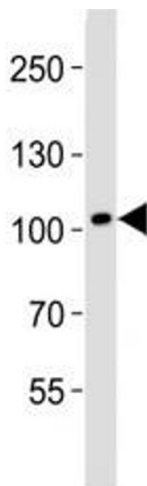
Western Blotting

Image 1. Western blot analysis of lysate from mouse kidney tissue lysate using DDR1 antibody diluted at 1:1000. Predicted molecular weight: 100~125KD.



Western Blotting

Image 2. Western blot analysis of lysate from human brain tissue lysate using DDR1 antibody diluted at 1:1000.



Western Blotting

Image 3. Western blot analysis of lysate from human brain tissue lysate using DDR1 antibody diluted at 1:1000.