

Datasheet for ABIN3030734  
**anti-DDR1 antibody (AA 299-330)**[Go to Product page](#)

## 7 Images

## Overview

Quantity:	0.4 mL
Target:	DDR1
Binding Specificity:	AA 299-330
Reactivity:	Human
Host:	Rabbit
Clonality:	Polyclonal
Conjugate:	This DDR1 antibody is un-conjugated
Application:	Western Blotting (WB), ELISA, Immunohistochemistry (IHC), Flow Cytometry (FACS), Immunofluorescence (IF)

## Product Details

Immunogen:	A portion of amino acids 299-330 from the human protein was used as the immunogen for this DDR1 antibody.
Isotype:	Ig Fraction
Purification:	Purified

## Target Details

Target:	DDR1
Alternative Name:	DDR1 ( <a href="#">DDR1 Products</a> )
Background:	Receptor tyrosine kinases (RTKs) play a key role in the communication of cells with their microenvironment. These molecules are involved in the regulation of cell growth, differentiation

## Target Details

and metabolism. DDR1 is an RTK that is widely expressed in normal and transformed epithelial cells and is activated by various types of collagen. It belongs to a subfamily of tyrosine kinase receptors with a homology region to the Dictyostelium discoideum protein discoidin I in their extracellular domain. Its autophosphorylation is achieved by all collagens so far tested (type I to type VI). In situ studies and Northern-blot analysis show that expression of DDR1 is restricted to epithelial cells, particularly in the kidney, lung, gastrointestinal tract, and brain. In addition, it is significantly over-expressed in several human tumors from breast, ovarian, esophageal, and pediatric brain.

UniProt: [Q08345](#)

Pathways: [RTK Signaling, Smooth Muscle Cell Migration](#)

## Application Details

Application Notes: Titration of the DDR1 antibody may be required due to differences in protocols and secondary/substrate sensitivity.\. Western blot: 1:1000,IHC (Paraffin): 1:10-1:50,Immunofluorescence: 1:10-1:50,Flow Cytometry: 1:10-1:50

Restrictions: For Research Use only

## Handling

Format: Liquid

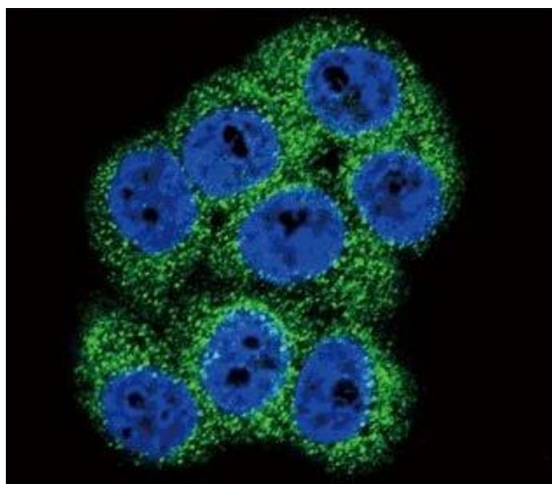
Buffer: In 1X PBS, pH 7.4, with 0.09 % sodium azide

Preservative: Sodium azide

Precaution of Use: This product contains Sodium azide: a POISONOUS AND HAZARDOUS SUBSTANCE which should be handled by trained staff only.

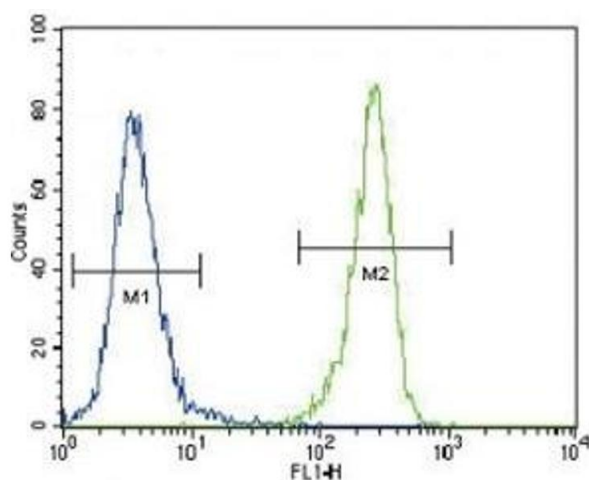
Storage: -20 °C

Storage Comment: Aliquot the DDR1 antibody and store frozen at -20°C or colder. Avoid repeated freeze-thaw cycles.



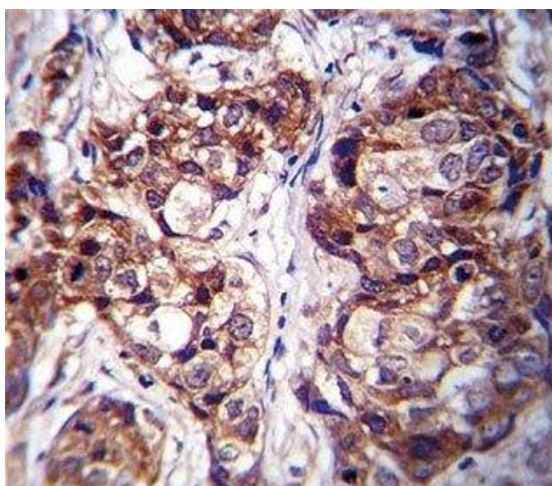
#### Immunofluorescence

**Image 1.** Confocal immunofluorescent analysis of DDR1 antibody with 293 cells followed by Alexa Fluor 488-conjugated goat anti-rabbit IgG (green). DAPI was used as a nuclear counterstain (blue).



#### Flow Cytometry

**Image 2.** DDR1 antibody flow cytometric analysis of 293 cells (right histogram)



#### Immunohistochemistry

**Image 3.** DDR1 antibody immunohistochemistry analysis in formalin fixed and paraffin embedded human breast carcinoma.

Please check the [product details page](#) for more images. Overall 7 images are available for ABIN3030734.