

Datasheet for ABIN3030768
anti-DRD3 antibody (C-Term)[Go to Product page](#)

3 Images

Overview

| | |
|----------------------|--|
| Quantity: | 100 µg |
| Target: | DRD3 |
| Binding Specificity: | C-Term |
| Reactivity: | Human, Rat, Mouse |
| Host: | Rabbit |
| Clonality: | Polyclonal |
| Conjugate: | This DRD3 antibody is un-conjugated |
| Application: | Western Blotting (WB), Immunohistochemistry (Paraffin-embedded Sections) (IHC (p)) |

Product Details

| | |
|---------------|---|
| Immunogen: | An amino acid sequence from the C-terminus of human Dopamine Receptor D3 (NTHCQTCHVSPELYSA) was used as the immunogen for this Dopamine Receptor D3 antibody. |
| Isotype: | IgG |
| Purification: | Antigen affinity |

Target Details

| | |
|-------------------|---|
| Target: | DRD3 |
| Alternative Name: | Dopamine Receptor D3 (DRD3 Products) |
| Background: | DRD3 is a dopamine receptor that differs in its pharmacology and signaling system from the D1 and D2 receptors and represents both an autoreceptor and a postsynaptic receptor. DRD3 is localized to limbic areas of the brain, which are associated with cognitive, emotional, and |

Target Details

endocrine functions. The DRD3 gene, which is mapped to chromosome 3, is like the DRD2 gene but unlike most other members of this superfamily and it contains introns, 5 in number. The position of 2 of the introns corresponds to that of introns in DRD2. The D3 receptor appeared to mediate some of the effects of antipsychotic drugs and drugs used in the treatment of Parkinson disease, which were previously thought to interact only with D2 receptors.

UniProt: [P35462](#)

Pathways: [Regulation of Systemic Arterial Blood Pressure by Hormones](#), [cAMP Metabolic Process](#), [Regulation of G-Protein Coupled Receptor Protein Signaling](#), [Proton Transport](#), [Negative Regulation of Transporter Activity](#)

Application Details

Application Notes: The stated application concentrations are suggested starting amounts. Titration of the Dopamine Receptor D3 antibody may be required due to differences in protocols and secondary/substrate sensitivity. Western blot: 0.5-1 µg/mL, IHC (Paraffin): 0.5-1 µg/mL

Restrictions: For Research Use only

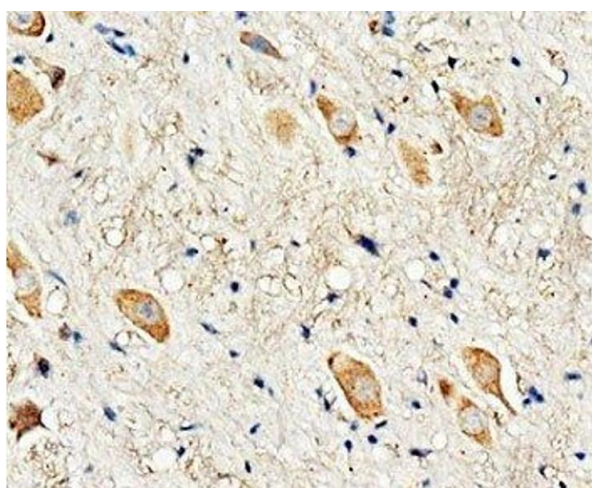
Handling

Buffer: 0.5 mg/mL if reconstituted with 0.2 mL sterile DI water

Storage: -20 °C

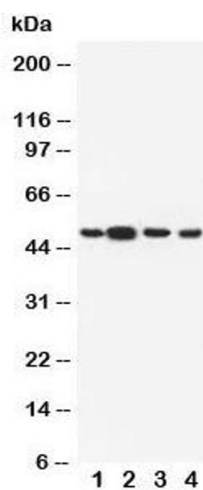
Storage Comment: After reconstitution, the Dopamine Receptor D3 antibody can be stored for up to one month at 4°C. For long-term, aliquot and store at -20°C. Avoid repeated freezing and thawing.

Images



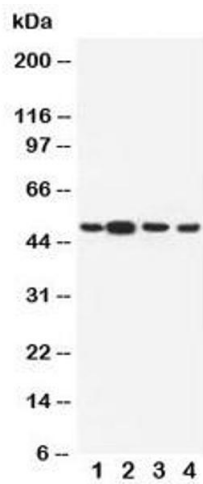
Immunohistochemistry

Image 1. IHC-P: Dopamine Receptor D3 antibody testing of rat brain tissue



Western Blotting

Image 2. Western blot testing of Dopamine Receptor D3 antibody and Lane 1: rat testis; 2: rat brain; 3: U87; 4: HeLa cell lysate



Western Blotting

Image 3. Western blot testing of Dopamine Receptor D3 antibody and Lane 1: rat testis