

Datasheet for ABIN3030770  
**anti-Doublecortin antibody (AA 107-137)**



[Go to Product page](#)

3 Images

## Overview

Quantity:	0.4 mL
Target:	Doublecortin (DCX)
Binding Specificity:	AA 107-137
Reactivity:	Human
Host:	Rabbit
Clonality:	Polyclonal
Conjugate:	This Doublecortin antibody is un-conjugated
Application:	Western Blotting (WB), ELISA, Immunohistochemistry (IHC)

## Product Details

Immunogen:	A portion of amino acids 107-137 from the human protein was used as the immunogen for this DCX antibody.
Isotype:	Ig Fraction
Cross-Reactivity (Details):	Expected species reactivity: Mouse, Rat
Purification:	Antigen affinity purified

## Target Details

Target:	Doublecortin (DCX)
Alternative Name:	DCX ( <a href="#">DCX Products</a> )
Background:	In the developing cortex, cortical neurons must migrate over long distances to reach the site of

## Target Details

---

their final differentiation. DCX is a cytoplasmic protein which appears to direct neuronal migration by regulating the organization and stability of microtubules. It contains two doublecortin domains, which bind microtubules. In addition, this protein interacts with LIS1, the regulatory gamma subunit of platelet activating factor acetylhydrolase, and this interaction is important to proper microtubule function in the developing cortex. Mutations in the gene encoding DCX are a cause of X-linked lissencephaly.

UniProt: [O43602](#)

## Application Details

---

Application Notes: Titration of the DCX antibody may be required due to differences in protocols and secondary/substrate sensitivity.\. Western blot: 1:1000,IHC (Paraffin): 1:10-1:50

Restrictions: For Research Use only

## Handling

---

Format: Liquid

Buffer: In 1X PBS, pH 7.4, with 0.09 % sodium azide

Preservative: Sodium azide

Precaution of Use: This product contains Sodium azide: a POISONOUS AND HAZARDOUS SUBSTANCE which should be handled by trained staff only.

Storage: -20 °C

Storage Comment: Aliquot the DCX antibody and store frozen at -20°C or colder. Avoid repeated freeze-thaw cycles.



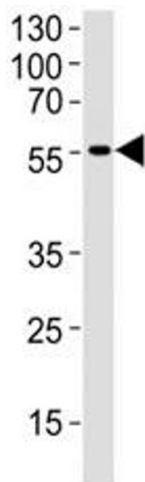
### Immunohistochemistry

**Image 1.** IHC analysis of FFPE human skeletal muscle tissue stained with DCX antibody



### Western Blotting

**Image 2.** Western blot analysis of human brain tissue lysate using DCX antibody at 1:1000. Predicted molecular weight: 40-50 kDa.



### Western Blotting

**Image 3.** Western blot analysis of human brain tissue lysate using DCX antibody at 1:1000. Predicted molecular weight: 40-50 kDa.