

Datasheet for ABIN3030786
anti-E2F1 antibody (AA 342-371)[Go to Product page](#)

5 Images

Overview

Quantity:	0.4 mL
Target:	E2F1
Binding Specificity:	AA 342-371
Reactivity:	Human
Host:	Rabbit
Clonality:	Polyclonal
Conjugate:	This E2F1 antibody is un-conjugated
Application:	Western Blotting (WB), ELISA

Product Details

Immunogen:	A portion of amino acids 342-371 from the human protein was used as the immunogen for this E2F1 antibody.
Isotype:	Ig Fraction
Purification:	Antigen affinity purified

Target Details

Target:	E2F1
Alternative Name:	E2F1 (E2F1 Products)
Background:	E2F1 is a transcription activator that binds DNA cooperatively with DP proteins through the E2 recognition site, 5'-TTTC[CG]CGC-3' found in the promoter region of a number of genes whose products are involved in cell cycle regulation or in DNA replication. The DRTF1/E2F complex

Target Details

functions in the control of cell-cycle progression from G1 to S phase. E2F1 binds preferentially RB1 in a cell-cycle dependent manner. It can mediate both cell proliferation and TP53/p53-dependent apoptosis. Blocks adipocyte differentiation by binding to specific promoters repressing CEBPA binding to its target gene promoters. [UniProt]

UniProt: [Q01094](#)

Pathways: [p53 Signaling](#), [Cell Division Cycle](#), [Mitotic G1-G1/S Phases](#), [DNA Replication](#), [M Phase](#), [Autophagy](#)

Application Details

Application Notes: Titration of the E2F1 antibody may be required due to differences in protocols and secondary/substrate sensitivity.\. Western blot: 1:1000

Restrictions: For Research Use only

Handling

Format: Liquid

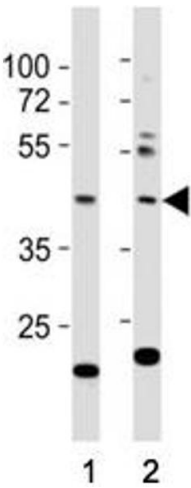
Buffer: In 1X PBS, pH 7.4, with 0.09 % sodium azide

Preservative: Sodium azide

Precaution of Use: This product contains Sodium azide: a POISONOUS AND HAZARDOUS SUBSTANCE which should be handled by trained staff only.

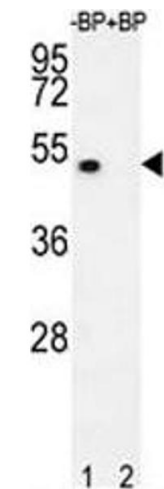
Storage: -20 °C

Storage Comment: Aliquot the E2F1 antibody and store frozen at -20°C or colder. Avoid repeated freeze-thaw cycles.



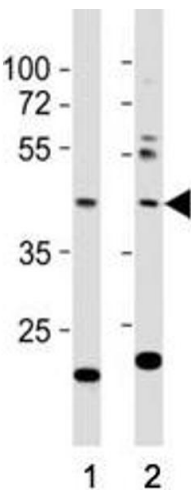
Western Blotting

Image 1. Western blot testing of E2F1 antibody at 1:1000 dilution. Lane 1: NIH3T3 lysate



Western Blotting

Image 2. Western blot analysis of E2F1 antibody pre-incubated without (lane 1) and with (2) blocking peptide in 293T lysate. Predicted molecular weight: 48-60 kDa.



Western Blotting

Image 3. Western blot testing of E2F1 antibody at 1:1000 dilution. Lane 1: NIH3T3 lysate; 2: A431; Predicted molecular weight: 48-60 kDa.

Please check the [product details page](#) for more images. Overall 5 images are available for ABIN3030786.