

Datasheet for ABIN3030789  
**anti-E2F2 antibody (C-Term)**[Go to Product page](#)

## 2 Images

## Overview

Quantity:	100 µg
Target:	E2F2
Binding Specificity:	C-Term
Reactivity:	Human, Mouse, Rat
Host:	Rabbit
Clonality:	Polyclonal
Conjugate:	This E2F2 antibody is un-conjugated
Application:	Western Blotting (WB)

## Product Details

Immunogen:	An amino acid sequence from the C-terminus of human E2F transcription factor 2 (ISDLFDSYDLGDLIN) was used as the immunogen for this E2F2 antibody (100% mouse homology).
Isotype:	IgG
Purification:	Antigen affinity

## Target Details

Target:	E2F2
Alternative Name:	E2F2 ( <a href="#">E2F2 Products</a> )
Background:	E2F transcription factor 2, also called E2F-2, is a member of the E2F family of transcription factors. The E2F family plays a crucial role in the control of cell cycle and action of tumor

## Target Details

suppressor proteins and is also a target of the transforming proteins of small DNA tumor viruses. The gene is mapped to 1p36 by fluorescence in situ hybridization. Electrophoretic mobility shift assays revealed the specific binding of E2F2 to ECE1b promoter sequences containing either allele of the C-338A polymorphism, with the -338A allele being associated with an increased affinity to E2F2 compared with -338C. The ability of Myc to induce S phase was impaired in the absence of either E2f2 or E2f3 but not E2f1 or E2f4. In contrast, the ability of Myc to induce apoptosis was markedly reduced in cells deleted for E2f1 but not E2f2 or E2f3.

UniProt: [Q14209](#)

Pathways: [Cell Division Cycle](#), [Mitotic G1-G1/S Phases](#), [DNA Replication](#)

## Application Details

Application Notes: The stated application concentrations are suggested starting amounts. Titration of the E2F2 antibody may be required due to differences in protocols and secondary/substrate sensitivity.\.  
Western blot: 0.5-1 µg/mL

Restrictions: For Research Use only

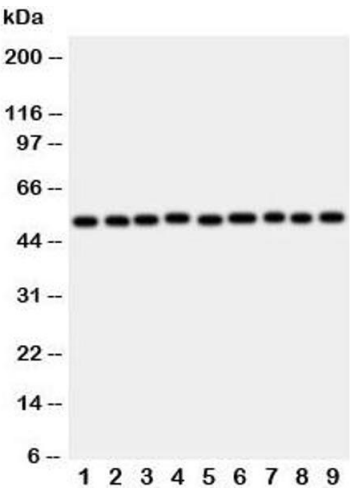
## Handling

Buffer: 0.5 mg/mL if reconstituted with 0.2 mL sterile DI water

Storage: -20 °C

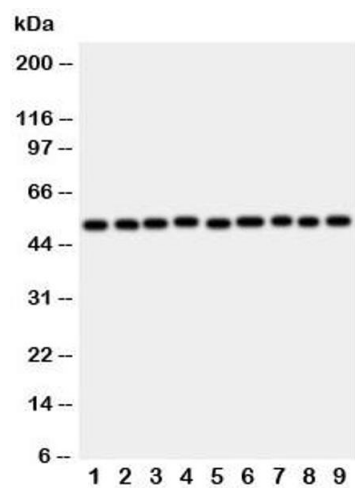
Storage Comment: After reconstitution, the E2F2 antibody can be stored for up to one month at 4°C. For long-term, aliquot and store at -20°C. Avoid repeated freezing and thawing.

## Images



### Western Blotting

**Image 1.** Western blot testing of E2F2 antibody and rat samples 1: lung; 2: heart; 3: brain; 4: kidney; and human samples 5: HeLa; 6: COLO320; 7: A549; 8: MCF-7; 9: SMMC-7721 cell lysate. Expected size 47-52KD



Western Blotting

**Image 2.** Western blot testing of E2F2 antibody and rat samples 1: lung