



[Go to Product page](#)

Datasheet for ABIN3030801  
**anti-EED antibody (AA 269-303)**

2 Images

### Overview

Quantity:	0.4 mL
Target:	EED
Binding Specificity:	AA 269-303
Reactivity:	Human, Mouse
Host:	Rabbit
Clonality:	Polyclonal
Conjugate:	This EED antibody is un-conjugated
Application:	Western Blotting (WB), ELISA

### Product Details

Immunogen:	This EED antibody was produced from a rabbit immunized with a KLH conjugated synthetic peptide between 269-303 amino acids from the central region of mouse Eed.
Isotype:	Ig Fraction
Purification:	Antigen affinity purified

### Target Details

Target:	EED
Alternative Name:	EED ( <a href="#">EED Products</a> )
Background:	Polycomb group (PcG) protein. Component of the PRC2/EED- EZH2 complex, which methylates 'Lys-9' and 'Lys-27' of histone H3, leading to transcriptional repression of the affected target gene. Also recognizes 'Lys-26' trimethylated histone H1 with the effect of inhibiting PRC2

## Target Details

---

complex methyltransferase activity on nucleosomal histone H3 'Lys-27', whereas H3 'Lys-27' recognition has the opposite effect, enabling the propagation of this repressive mark (By similarity). The PRC2/EED-EZH2 complex may also serve as a recruiting platform for DNA methyltransferases, thereby linking two epigenetic repression systems (By similarity). Genes repressed by the PRC2/EED-EZH2 complex include HOXA7, HOXB6 and HOXC8. Plays a role in X chromosome inactivation (XCI), in which one of the two X chromosomes in female mammals is transcriptionally silenced to equalize X-linked gene dosage with XY males. Required for stable maintenance of XCI in both embryonic and extraembryonic tissues. May prevent transcriptional activation of facultative heterochromatin during differentiation. Required for development of secondary trophoblast giant cells during placental development. May regulate hippocampal synaptic plasticity in the developing brain.

UniProt: [Q921E6](#)

## Application Details

---

Application Notes: Titration of the EED antibody may be required due to differences in protocols and secondary/substrate sensitivity.\. Western blot: 1:1000

Restrictions: For Research Use only

## Handling

---

Format: Liquid

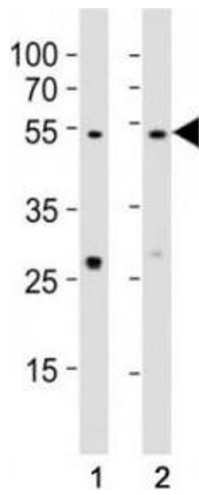
Buffer: In 1X PBS, pH 7.4, with 0.09 % sodium azide

Preservative: Sodium azide

Precaution of Use: This product contains Sodium azide: a POISONOUS AND HAZARDOUS SUBSTANCE which should be handled by trained staff only.

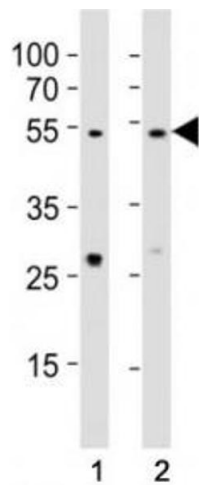
Storage: -20 °C

Storage Comment: Aliquot the EED antibody and store frozen at -20°C or colder. Avoid repeated freeze-thaw cycles.



#### Western Blotting

**Image 1.** Western blot testing of EED antibody at 1:1000 dilution. Lane 1: A431 lysate; 2: NIH3T3 lysate; Predicted molecular weight: 50 kDa (isoform 1), 53 kDa (isoform 2), 46 kDa (isoform 3).



#### Western Blotting

**Image 2.** Western blot testing of EED antibody at 1:1000 dilution. Lane 1: A431 lysate