

Datasheet for ABIN3030802  
**anti-EED antibody (N-Term)**[Go to Product page](#)

## 2 Images

## Overview

Quantity:	0.4 mL
Target:	EED
Binding Specificity:	N-Term
Reactivity:	Human, Mouse
Host:	Rabbit
Clonality:	Polyclonal
Conjugate:	This EED antibody is un-conjugated
Application:	Western Blotting (WB), ELISA

## Product Details

Immunogen:	This EED antibody was produced from a rabbit immunized with a KLH conjugated synthetic peptide between 38-72 amino acids from the N-terminal region of human EED.
Isotype:	Ig Fraction
Purification:	Antigen affinity purified

## Target Details

Target:	EED
Alternative Name:	EED ( <a href="#">EED Products</a> )
Background:	Polycomb protein EED is a member of the Polycomb-group (PcG) family. PcG family members form multimeric protein complexes, which are involved in maintaining the transcriptional repressive state of genes over successive cell generations. This protein interacts with enhancer

## Target Details

of zeste 2, the cytoplasmic tail of integrin  $\beta$ ,7, immunodeficiency virus type 1 (HIV-1) MA protein, and histone deacetylase proteins. This protein mediates repression of gene activity through histone deacetylation, and may act as a specific regulator of integrin function. Two transcript variants encoding distinct isoforms have been identified for this gene. [Wiki]

UniProt: [O75530](#)

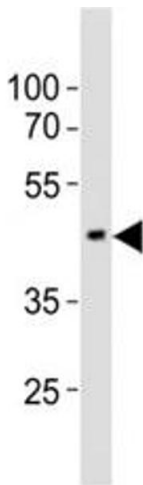
## Application Details

Application Notes:	Titration of the EED antibody may be required due to differences in protocols and secondary/substrate sensitivity.\. Western blot: 1:1000
Restrictions:	For Research Use only

## Handling

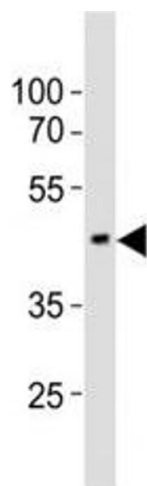
Format:	Liquid
Buffer:	In 1X PBS, pH 7.4, with 0.09 % sodium azide
Preservative:	Sodium azide
Precaution of Use:	This product contains Sodium azide: a POISONOUS AND HAZARDOUS SUBSTANCE which should be handled by trained staff only.
Storage:	-20 °C
Storage Comment:	Aliquot the EED antibody and store frozen at -20°C or colder. Avoid repeated freeze-thaw cycles.

## Images



**Western Blotting**

**Image 1.** Western blot testing of EED antibody at 1:1000 dilution + mouse brain lysate



#### Western Blotting

**Image 2.** Western blot testing of EED antibody at 1:1000 dilution + mouse brain lysate; Predicted molecular weight: 50 kDa (isoform 1), 53 kDa (isoform 2), 46 kDa (isoform 3).