

Datasheet for ABIN3030806  
**anti-EZH1 antibody (AA 393-422)**

## 5 Images

[Go to Product page](#)

## Overview

Quantity:	0.4 mL
Target:	EZH1
Binding Specificity:	AA 393-422
Reactivity:	Human
Host:	Rabbit
Clonality:	Polyclonal
Conjugate:	This EZH1 antibody is un-conjugated
Application:	Western Blotting (WB), ELISA, Immunohistochemistry (IHC)

## Product Details

Immunogen:	A portion of amino acids 393-422 from the human protein was used as the immunogen for this EZH1 antibody.
Isotype:	Ig Fraction
Cross-Reactivity (Details):	Expected species reactivity: Bovine
Purification:	Purified

## Target Details

Target:	EZH1
Alternative Name:	EZH1 ( <a href="#">EZH1 Products</a> )
Background:	EZH1 encodes a protein of 747 amino acids that displays 55 % amino acid identity overall with

## Target Details

the Drosophila homolog.<sup>1</sup> The strong sequence conservation suggested potential roles for EZH1 in human development as a transcriptional regulator and as a component of protein complexes that preserve heterochromatin stability. EZH1 is expressed as 2 major transcripts in all adult and fetal human tissues evaluated. Analysis of an EZH1 cDNA revealed an unusual splicing event involving EZH1 and a tandemly linked gene GPR2 and suggested a potential mechanism for modifying the EZH1 protein in the conserved C-terminal domain. The GPR2 gene maps to 17q21.1-q21.3 in the vicinity of the BRCA1 gene.

UniProt: [Q92800](#)

## Application Details

Application Notes: Titration of the EZH1 antibody may be required due to differences in protocols and secondary/substrate sensitivity.\. Western blot: 1:1000,IHC (Paraffin): 1:50-1:100

Restrictions: For Research Use only

## Handling

Format: Liquid

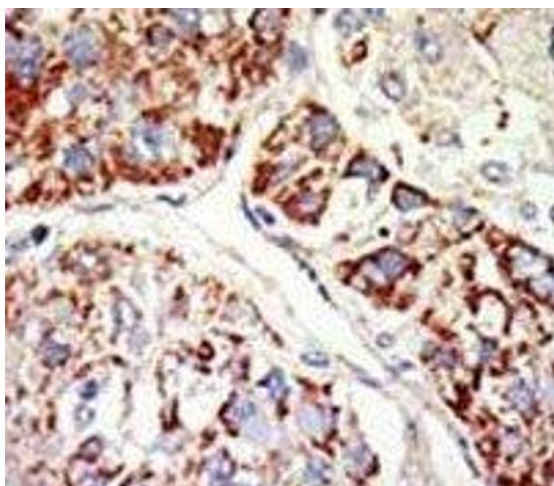
Buffer: In 1X PBS pH 7.4 with 0.09 % sodium azide

Preservative: Sodium azide

Precaution of Use: This product contains Sodium azide: a POISONOUS AND HAZARDOUS SUBSTANCE which should be handled by trained staff only.

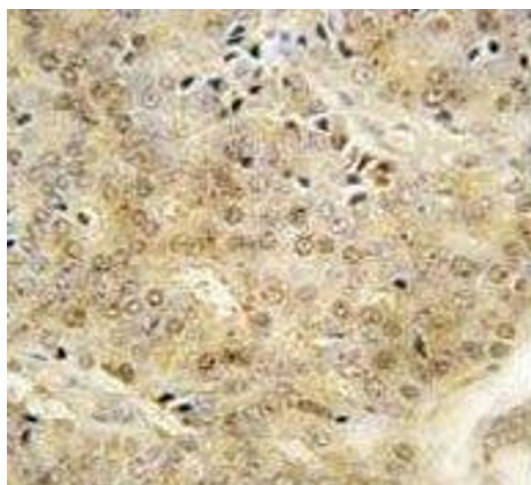
Storage: -20 °C

Storage Comment: Aliquot the EZH1 antibody and store frozen at -20°C or colder. Avoid repeated freeze-thaw cycles.



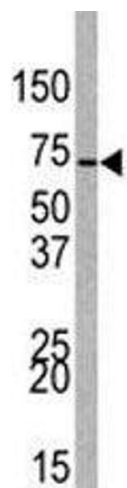
#### Immunohistochemistry

**Image 1.** IHC analysis of FFPE human hepatocarcinoma tissue stained with the EZH1 antibody



#### Immunohistochemistry

**Image 2.** IHC analysis of FFPE human prostate carcinoma tissue stained with EZH1 antibody



#### Western Blotting

**Image 3.** Western blot analysis of EZH1 antibody and 293 lysate.

Please check the [product details page](#) for more images. Overall 5 images are available for ABIN3030806.