

Datasheet for ABIN3030817  
**anti-EPH Receptor A2 antibody (AA 30-60)**

## 5 Images

[Go to Product page](#)

## Overview

Quantity:	0.4 mL
Target:	EPH Receptor A2 (EPHA2)
Binding Specificity:	AA 30-60
Reactivity:	Human, Mouse
Host:	Rabbit
Clonality:	Polyclonal
Conjugate:	This EPH Receptor A2 antibody is un-conjugated
Application:	Western Blotting (WB), ELISA, Immunohistochemistry (IHC), Flow Cytometry (FACS)

## Product Details

Immunogen:	A portion of amino acids 30-60 from the human protein was used as the immunogen for this EphA2 antibody.
Isotype:	Ig Fraction
Cross-Reactivity (Details):	Expected species reactivity: Primate
Purification:	Purified

## Target Details

Target:	EPH Receptor A2 (EPHA2)
Alternative Name:	EphA2 ( <a href="#">EPHA2 Products</a> )
Background:	Protein kinases are enzymes that transfer a phosphate group from a phosphate donor,

## Target Details

generally the  $\gamma$  phosphate of ATP, onto an acceptor amino acid in a substrate protein. By this basic mechanism, protein kinases mediate most of the signal transduction in eukaryotic cells, regulating cellular metabolism, transcription, cell cycle progression, cytoskeletal rearrangement and cell movement, apoptosis, and differentiation. With more than 500 gene products, the protein kinase family is one of the largest families of proteins in eukaryotes. The family has been classified in 8 major groups based on sequence comparison of their tyrosine (PTK) or serine/threonine (STK) kinase catalytic domains. The tyrosine kinase (TK) group is mainly involved in the regulation of cell-cell interactions such as differentiation, adhesion, motility and death. There are currently about 90 TK genes sequenced, 58 are of receptor protein TK (e.g. EGFR, EPH, FGFR, PDGFR, TRK, and VEGFR families), and 32 of cytosolic TK (e.g. ABL, FAK, JAK, and SRC families).

UniProt: [P29317](#)

Pathways: [RTK Signaling](#)

## Application Details

Application Notes: Titration of the EphA2 antibody may be required due to differences in protocols and secondary/substrate sensitivity. \. Western blot: 1:1000, Flow Cytometry: 1:10-1:50, IHC (Paraffin): 1:50-1:100

Restrictions: For Research Use only

## Handling

Format: Liquid

Buffer: In 1X PBS, pH 7.4, with 0.09 % sodium azide

Preservative: Sodium azide

Precaution of Use: This product contains Sodium azide: a POISONOUS AND HAZARDOUS SUBSTANCE which should be handled by trained staff only.

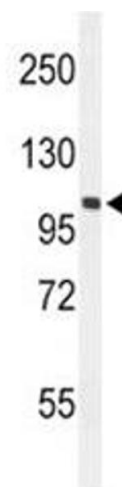
Storage: -20 °C

Storage Comment: Aliquot the EphA2 antibody and store frozen at -20°C or colder. Avoid repeated freeze-thaw cycles.



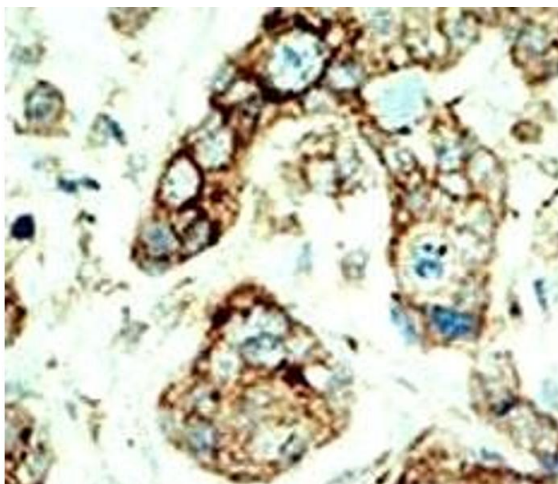
#### Western Blotting

**Image 1.** Western blot analysis of EphA2 antibody and MCF-7 lysate.



#### Western Blotting

**Image 2.** Western blot analysis of EphA2 antibody and mouse NIH3T3 lysate



#### Immunohistochemistry

**Image 3.** IHC analysis of FFPE human breast carcinoma tissue stained with the EphA2 antibody

Please check the [product details page](#) for more images. Overall 5 images are available for ABIN3030817.