



[Go to Product page](#)

Datasheet for ABIN3030820

anti-EPH Receptor A3 antibody (AA 896-928)

5 Images

Overview

Quantity:	0.4 mL
Target:	EPH Receptor A3 (EPHA3)
Binding Specificity:	AA 896-928
Reactivity:	Human, Hamster
Host:	Rabbit
Clonality:	Polyclonal
Conjugate:	This EPH Receptor A3 antibody is un-conjugated
Application:	Western Blotting (WB), ELISA, Immunohistochemistry (IHC)

Product Details

Immunogen:	A portion of amino acids 896-928 from the human protein was used as the immunogen for this EphA3 antibody.
Isotype:	Ig Fraction
Purification:	Purified

Target Details

Target:	EPH Receptor A3 (EPHA3)
Alternative Name:	EphA3 (EPHA3 Products)
Background:	Protein kinases are enzymes that transfer a phosphate group from a phosphate donor, generally the γ phosphate of ATP, onto an acceptor amino acid in a substrate protein. By this basic mechanism, protein kinases mediate most of the signal transduction in eukaryotic cells,

Target Details

regulating cellular metabolism, transcription, cell cycle progression, cytoskeletal rearrangement and cell movement, apoptosis, and differentiation. With more than 500 gene products, the protein kinase family is one of the largest families of proteins in eukaryotes. The family has been classified in 8 major groups based on sequence comparison of their tyrosine (PTK) or serine/threonine (STK) kinase catalytic domains. The tyrosine kinase (TK) group is mainly involved in the regulation of cell-cell interactions such as differentiation, adhesion, motility and death. There are currently about 90 TK genes sequenced, 58 are of receptor protein TK (e.g. EGFR, EPH, FGFR, PDGFR, TRK, and VEGFR families), and 32 of cytosolic TK (e.g. ABL, FAK, JAK, and SRC families).

UniProt: [P29320](#)

Pathways: [RTK Signaling, Regulation of Cell Size](#)

Application Details

Application Notes: Titration of the EphA3 antibody may be required due to differences in protocols and secondary/substrate sensitivity.\. Western blot: 1:1000,IHC (Paraffin): 1:50-1:100

Restrictions: For Research Use only

Handling

Format: Liquid

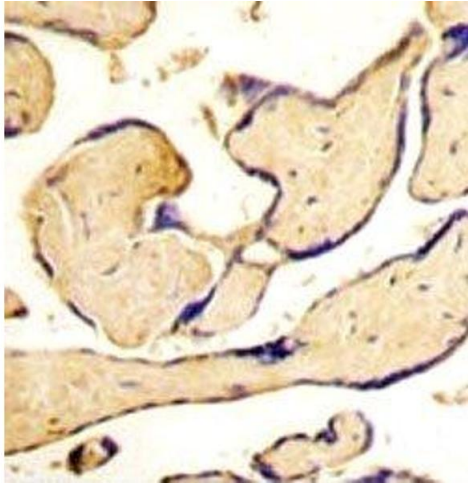
Buffer: In 1X PBS, pH 7.4, with 0.09 % sodium azide

Preservative: Sodium azide

Precaution of Use: This product contains Sodium azide: a POISONOUS AND HAZARDOUS SUBSTANCE which should be handled by trained staff only.

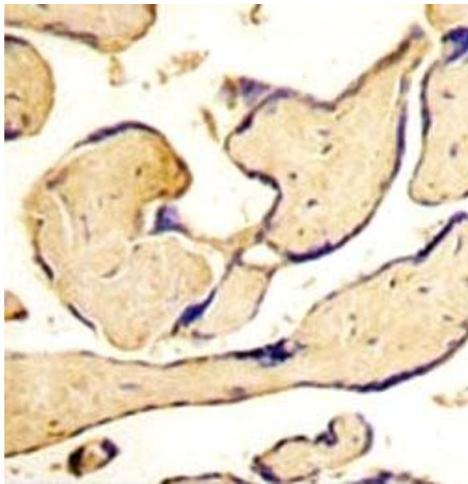
Storage: -20 °C

Storage Comment: Aliquot the EphA3 antibody and store frozen at -20°C or colder. Avoid repeated freeze-thaw cycles.



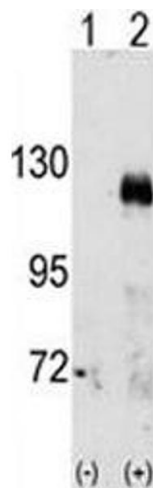
Immunohistochemistry

Image 1. IHC analysis of FFPE human placenta tissue stained with EphA3 antibody



Immunohistochemistry

Image 2. IHC analysis of FFPE human placenta tissue stained with EphA3 antibody



Western Blotting

Image 3. Western blot analysis of EphA3 antibody and 293 cell lysate either nontransfected (Lane 1) or transiently transfected with the EphA3 gene (2). Predicted molecular weight: 110/61 kDa (isoforms 1/2).

Please check the [product details page](#) for more images. Overall 5 images are available for ABIN3030820.