

Datasheet for ABIN3030845
anti-EGFR antibody (pTyr1172)



[Go to Product page](#)

6 Images

Overview

Quantity:	0.4 mL
Target:	EGFR
Binding Specificity:	pTyr1172
Reactivity:	Human
Host:	Rabbit
Clonality:	Polyclonal
Conjugate:	This EGFR antibody is un-conjugated
Application:	Western Blotting (WB), ELISA, Dot Blot (DB)

Product Details

Immunogen:	This phospho-EGFR antibody was produced from rabbits immunized with a KLH conjugated synthetic phosphopeptide corresponding to amino acid residues surrounding pY1172 of human EGFR.
Isotype:	Ig Fraction
Purification:	Antigen affinity purified

Target Details

Target:	EGFR
Alternative Name:	EGFR (EGFR Products)
Background:	Epidermal Growth factor receptor (EGFR) is the prototype member of the type 1 receptor tyrosine kinases. EGFR overexpression in tumors indicates poor prognosis and is observed in

Target Details

tumors of the head and neck, brain, bladder, stomach, breast, lung, endometrium, cervix, vulva, ovary, esophagus, stomach and in squamous cell carcinoma. EGFR is a receptor for EGF, but also for other members of the EGF family, including TGF-alpha, amphiregulin, betacellulin, heparin-binding EGF-like growth factor, GP30 and vaccinia virus growth factor. Is involved in the control of cell growth and differentiation.

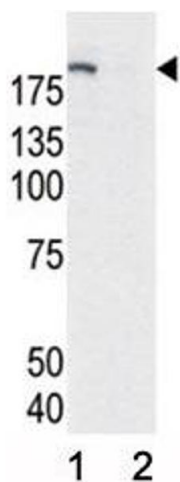
UniProt:	P00533
Pathways:	NF-kappaB Signaling , RTK Signaling , Fc-epsilon Receptor Signaling Pathway , EGFR Signaling Pathway , Neurotrophin Signaling Pathway , Stem Cell Maintenance , Hepatitis C , Positive Regulation of Response to DNA Damage Stimulus , Interaction of EGFR with phospholipase C-gamma , Thromboxane A2 Receptor Signaling , EGFR Downregulation , S100 Proteins

Application Details

Application Notes:	Titration of the phospho-EGFR antibody may be required due to differences in protocols and secondary/substrate sensitivity.\. Dot blot: 1:500,Western blot: 1:1000
Restrictions:	For Research Use only

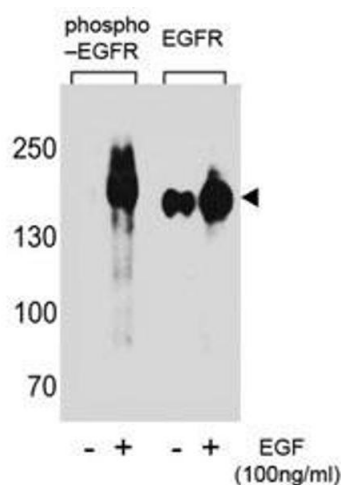
Handling

Format:	Liquid
Buffer:	In 1X PBS pH 7.4 with 0.09 % sodium azide
Preservative:	Sodium azide
Precaution of Use:	This product contains Sodium azide: a POISONOUS AND HAZARDOUS SUBSTANCE which should be handled by trained staff only.
Storage:	-20 °C
Storage Comment:	Aliquot the phospho-EGFR antibody and store frozen at -20°C or colder. Avoid repeated freeze-thaw cycles.



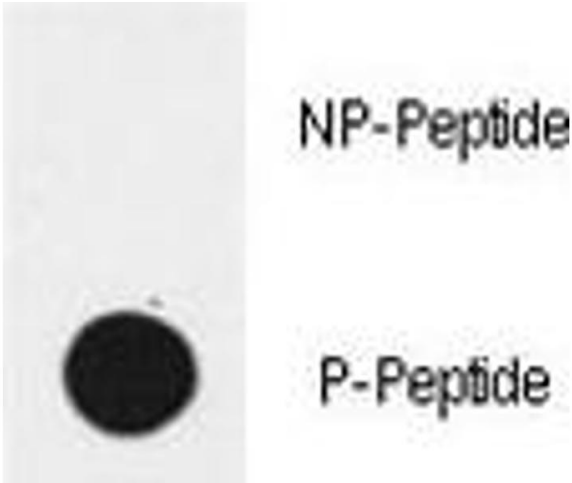
Western Blotting

Image 1. Western blot analysis of phospho-EGFR antibody and HeLa cell lysate, either induced (Lane 1) or noninduced with EGF (2).



Western Blotting

Image 2. Western blot analysis of extracts from A431 cells, untreated or treated with EGF using phospho-EGFR antibody (left) or nonphos Ab (right).



Dot Blot

Image 3. Dot blot analysis of phospho-EGFR antibody. 50ng of phos-peptide or nonphos-peptide per dot were spotted.

Please check the [product details page](#) for more images. Overall 6 images are available for ABIN3030845.