

Datasheet for ABIN3030863  
**anti-EPB41L1 antibody (C-Term)**[Go to Product page](#)

## 2 Images

## Overview

Quantity:	100 µg
Target:	EPB41L1
Binding Specificity:	C-Term
Reactivity:	Human, Mouse, Rat
Host:	Rabbit
Clonality:	Polyclonal
Conjugate:	This EPB41L1 antibody is un-conjugated
Application:	Western Blotting (WB)

## Product Details

Immunogen:	An amino acid sequence from the C-terminus of human Erythrocyte membrane protein band 4.1 like 1 (QDQERDTVFLKDNHLAIERK) was used as the immunogen for this EPB41L1 antibody.
Isotype:	IgG
Purification:	Antigen affinity

## Target Details

Target:	EPB41L1
Alternative Name:	EPB41L1 ( <a href="#">EPB41L1 Products</a> )
Background:	Erythrocyte membrane protein band 4.1 like 1 is a protein that in humans is encoded by the EPB41L1 gene. It is found that a heterozygous missense mutation in the gene causes nonsyndromic intellectual disability. This gene may function to confer stability and plasticity to

## Target Details

neuronal membrane via multiple interactions, including the spectrin-actin-based cytoskeleton, integral membrane channels and membrane-associated guanylate kinases. EPB41L1 has been shown to interact with ITPR1, Dopamine receptor D2, Dopamine receptor D3, CENTG1 and Nuclear mitotic apparatus protein 1.

UniProt: [Q9H4G0](#)

## Application Details

Application Notes: The stated application concentrations are suggested starting amounts. Titration of the EPB41L1 antibody may be required due to differences in protocols and secondary/substrate sensitivity.\. Western blot: 0.5-1 µg/mL

Restrictions: For Research Use only

## Handling

Buffer: 0.5 mg/mL if reconstituted with 0.2 mL sterile DI water

Storage: -20 °C

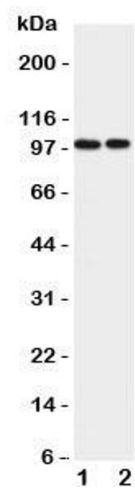
Storage Comment: After reconstitution, the EPB41L1 antibody can be stored for up to one month at 4°C. For long-term, aliquot and store at -20°C. Avoid repeated freezing and thawing.

## Images



### Western Blotting

**Image 1.** Western blot testing of EPB41L1 antibody and  
Lane 1: rat brain; 2: mouse brain lysate. Predicted/observed  
size ~99KD



Western Blotting

**Image 2.** Western blot testing of EPB41L1 antibody and  
Lane 1: rat brain