

Datasheet for ABIN3030866
anti-EPO antibody (AA 1-166)



[Go to Product page](#)

3 Images

Overview

| | |
|----------------------|--|
| Quantity: | 100 µg |
| Target: | EPO |
| Binding Specificity: | AA 1-166 |
| Reactivity: | Human |
| Host: | Rabbit |
| Clonality: | Polyclonal |
| Conjugate: | This EPO antibody is un-conjugated |
| Application: | Western Blotting (WB), Immunohistochemistry (Paraffin-embedded Sections) (IHC (p)), ELISA (Standard) |

Product Details

| | |
|---------------|---|
| Immunogen: | Human partial recombinant protein (AA 1-166) was used as the immunogen for this EPO antibody. |
| Isotype: | IgG |
| Purification: | Antigen affinity |

Target Details

| | |
|-------------------|--------------------------------------|
| Target: | EPO |
| Alternative Name: | EPO (EPO Products) |
| Target Type: | Hormone |

Target Details

Background: EPO, Erythropoietin, is an acidic glycoprotein hormone with a molecular mass of 34 kD. It is a cytokine for erythrocyte (red blood cell) precursors in the bone marrow. This gene is mapped to 7q22.1. It is produced by interstitial fibroblasts in the kidney in close association with peritubular capillary and tubular epithelial cells. It is also produced in perisinusoidal cells in the liver. While liver production predominates in the fetal and perinatal period, renal production is predominant during adulthood. As the prime regulator of red cell production, its major functions are to promote erythroid differentiation and to initiate hemoglobin synthesis. It also has other known biological functions. For example, erythropoietin plays an important role in the brains response to neuronal injury. EPO is also involved in the wound healing process.

UniProt: [P01588](#)

Pathways: [JAK-STAT Signaling](#), [Hormone Activity](#), [Negative Regulation of intrinsic apoptotic Signaling](#), [Negative Regulation of Transporter Activity](#)

Application Details

Application Notes: The stated application concentrations are suggested starting points. Titration of the EPO antibody may be required due to differences in protocols and secondary/substrate sensitivity.\. Western blot (recombinant protein): 0.5-1 µg/mL,IHC (Paraffin): 0.5-1 µg/mL,ELISA: 0.1-0.5 µg/mL

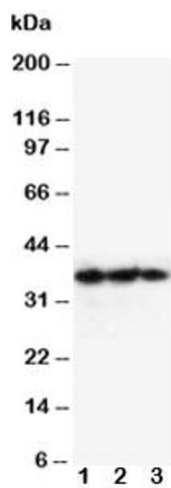
Restrictions: For Research Use only

Handling

Buffer: 0.5 mg/mL if reconstituted with 0.2 mL sterile DI water

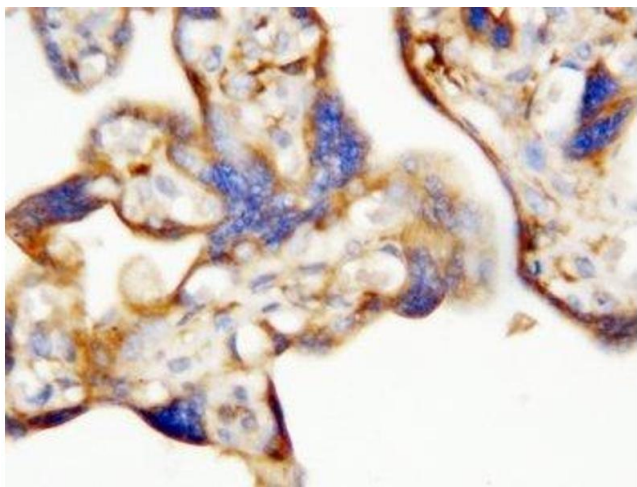
Storage: -20 °C

Storage Comment: After reconstitution, the EPO antibody can be stored for up to one month at 4°C. For long-term, aliquot and store at -20°C. Avoid repeated freezing and thawing.



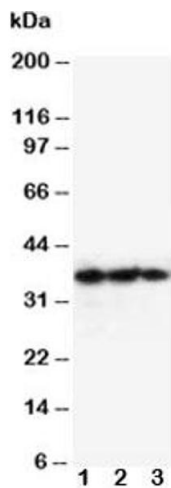
Western Blotting

Image 1. Western blot testing of EPO antibody and Lane 1: Recombinant human protein 10ng



Immunohistochemistry

Image 2. IHC-P: EPO antibody testing of human placenta tissue



Western Blotting

Image 3. Western blot testing of EPO antibody and Lane 1: Recombinant human protein 10ng; 2: 5ng; 3: 2.5ng