

Datasheet for ABIN3030867
anti-EPO antibody (AA 20-48)[Go to Product page](#)

5 Images

Overview

Quantity:	0.4 mL
Target:	EPO
Binding Specificity:	AA 20-48
Reactivity:	Human, Mouse
Host:	Rabbit
Clonality:	Polyclonal
Conjugate:	This EPO antibody is un-conjugated
Application:	Western Blotting (WB), ELISA

Product Details

Immunogen:	A portion of amino acids 20-48 from the human protein was used as the immunogen for this Erythropoietin antibody.
Isotype:	Ig Fraction
Cross-Reactivity (Details):	Expected species reactivity: Primate
Purification:	Antigen affinity purified

Target Details

Target:	EPO
Alternative Name:	Erythropoietin (EPO Products)
Target Type:	Hormone

Target Details

Background: EPO is a member of the EPO/TPO family and encodes a secreted, glycosylated cytokine composed of four alpha helical bundles. The protein is found in the plasma and regulates red cell production by promoting erythroid differentiation and initiating hemoglobin synthesis. This protein also has neuroprotective activity against a variety of potential brain injuries and antiapoptotic functions in several tissue types. [provided by RefSeq].

UniProt: [P01588](#)

Pathways: [JAK-STAT Signaling](#), [Hormone Activity](#), [Negative Regulation of intrinsic apoptotic Signaling](#), [Negative Regulation of Transporter Activity](#)

Application Details

Application Notes: Titration of the Erythropoietin antibody may be required due to differences in protocols and secondary/substrate sensitivity.\. Western blot: 1:1000

Restrictions: For Research Use only

Handling

Format: Liquid

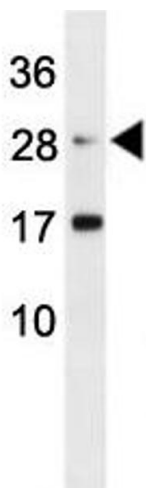
Buffer: In 1X PBS, pH 7.4, with 0.09 % sodium azide

Preservative: Sodium azide

Precaution of Use: This product contains Sodium azide: a POISONOUS AND HAZARDOUS SUBSTANCE which should be handled by trained staff only.

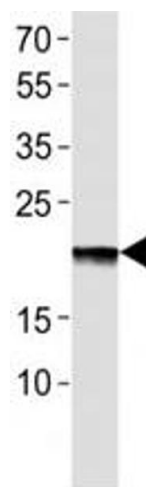
Storage: -20 °C

Storage Comment: Aliquot the Erythropoietin antibody and store frozen at -20°C or colder. Avoid repeated freeze-thaw cycles.



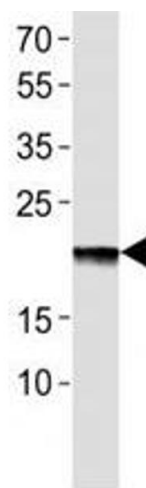
Western Blotting

Image 1. Erythropoietin antibody western blot analysis in mouse L929 lysate



Western Blotting

Image 2. Western blot analysis of lysate from EPO recombinant protein using Erythropoietin antibody at 1:1000.



Western Blotting

Image 3. Western blot analysis of lysate from EPO recombinant protein using Erythropoietin antibody at 1:1000.

Please check the [product details page](#) for more images. Overall 5 images are available for ABIN3030867.