



Datasheet for ABIN3030871

anti-Estrogen Receptor alpha antibody (AA 246-273)



[Go to Product page](#)

7 Images

Overview

Quantity:	0.4 mL
Target:	Estrogen Receptor alpha (ESR1)
Binding Specificity:	AA 246-273
Reactivity:	Human
Host:	Rabbit
Clonality:	Polyclonal
Conjugate:	This Estrogen Receptor alpha antibody is un-conjugated
Application:	Western Blotting (WB), Immunohistochemistry (IHC), ELISA, Immunofluorescence (IF)

Product Details

Immunogen:	A portion of amino acids 246-273 from the human protein (alpha) was used as the immunogen for this Estrogen Receptor antibody.
Isotype:	Ig Fraction
Cross-Reactivity (Details):	Expected species reactivity: Mouse, Rat, Bovine, Pig
Purification:	Antigen affinity purified

Target Details

Target:	Estrogen Receptor alpha (ESR1)
Alternative Name:	Estrogen Receptor (ESR1 Products)
Background:	This gene encodes an Estrogen receptor, a ligand-activated transcription factor composed of

Target Details

several domains important for hormone binding, DNA binding, and activation of transcription. Estrogen and its receptors are essential for sexual development and reproductive function, but also play a role in other tissues such as bone. ERs are also involved in pathological processes including breast cancer, endometrial cancer, and osteoporosis.

UniProt: [P03372](#)

Pathways: [Nuclear Receptor Transcription Pathway](#), [EGFR Signaling Pathway](#), [Retinoic Acid Receptor Signaling Pathway](#), [Intracellular Steroid Hormone Receptor Signaling Pathway](#), [Steroid Hormone Mediated Signaling Pathway](#), [Ribonucleoprotein Complex Subunit Organization](#), [Ribosome Assembly](#)

Application Details

Application Notes: The stated application concentrations are suggested starting amounts. Titration of the Estrogen Receptor antibody may be required due to differences in protocols and secondary/substrate sensitivity. \. Western blot: 1:1000,IHC (Paraffin): 1:10-1:50,Immunofluorescence: 1:10-1:50

Restrictions: For Research Use only

Handling

Format: Liquid

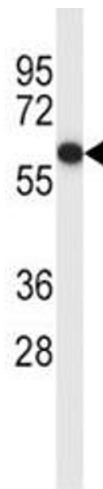
Buffer: In 1X PBS, pH 7.4, with 0.09 % sodium azide

Preservative: Sodium azide

Precaution of Use: This product contains Sodium azide: a POISONOUS AND HAZARDOUS SUBSTANCE which should be handled by trained staff only.

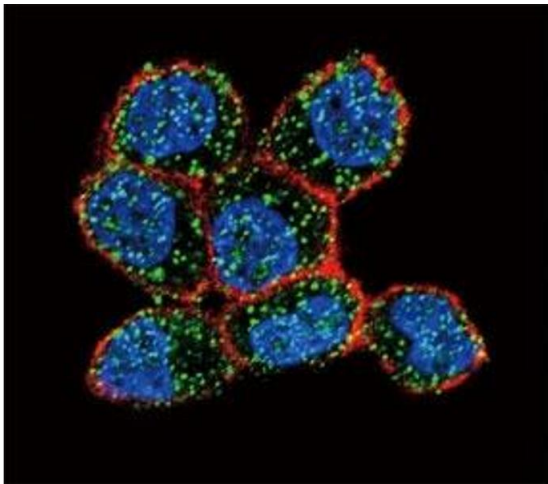
Storage: -20 °C

Storage Comment: Store at 4°C for up to one month. For long term, aliquot the Estrogen Receptor antibody and store frozen at -20°C or colder. Avoid repeated freeze-thaw cycles.



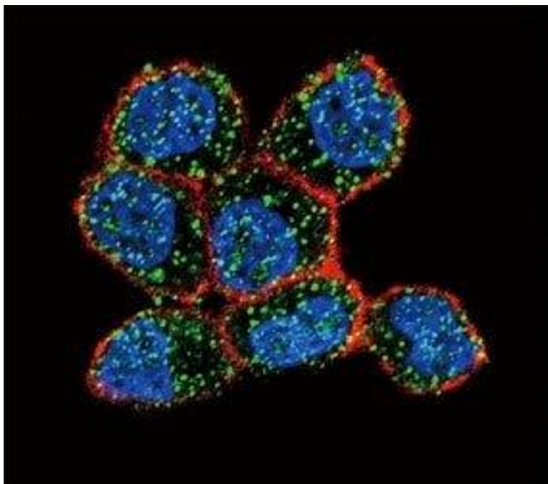
Western Blotting

Image 1. Estrogen Receptor antibody western blot analysis in MCF-7 lysate. Predicted molecular weight: 65-70 kDa.



Immunofluorescence

Image 2. Confocal immunofluorescent analysis of Estrogen Receptor antibody with ZR-75-1 cells followed by Alexa Fluor 488-conjugated goat anti-rabbit IgG (green). Actin filaments have been labeled with Alexa Fluor 555 Phalloidin (red). DAPI was used as a nuclear counterstain (blue).



Immunofluorescence

Image 3. Confocal immunofluorescent analysis of Estrogen Receptor antibody with ZR-75-1 cells followed by Alexa Fluor 488-conjugated goat anti-rabbit IgG (green). Actin filaments have been labeled with Alexa Fluor 555 Phalloidin (red). DAPI was used as a nuclear c

Please check the [product details page](#) for more images. Overall 7 images are available for ABIN3030871.