

Datasheet for ABIN3030888
anti-EIF2S2 antibody (C-Term)

2 Images

[Go to Product page](#)

Overview

Quantity:	100 µg
Target:	EIF2S2
Binding Specificity:	C-Term
Reactivity:	Human, Mouse, Rat
Host:	Rabbit
Clonality:	Polyclonal
Conjugate:	This EIF2S2 antibody is un-conjugated
Application:	Western Blotting (WB)

Product Details

Immunogen:	An amino acid sequence from the C-terminus of human EIF2 beta (FQAVTGKRAQLRAKAN) was used as the immunogen for this EIF2B antibody (100% homologous in human, mouse and rat).
Isotype:	IgG
Purification:	Antigen affinity

Target Details

Target:	EIF2S2
Alternative Name:	EIF2B (EIF2S2) (EIF2S2 Products)
Background:	Eukaryotic translation initiation factor 2 subunit 2, also called EIF2B, is a protein that in humans is encoded by the EIF2S2 gene. This gene belongs to the EIF-2-beta family. Eukaryotic translation initiation factor 2 (EIF2) functions in the early steps of protein synthesis by forming

Target Details

a ternary complex with GTP and initiator tRNA and binding to a 40S ribosomal subunit. EIF2 is composed of three subunits, alpha, beta, and gamma, with the protein encoded by this gene representing the beta subunit. The beta subunit catalyzes the exchange of GDP for GTP, which recycles the EIF2 complex for another round of initiation.

UniProt: [P20042](#)

Application Details

Application Notes: The stated application concentrations are suggested starting amounts. Titration of the EIF2B antibody may be required due to differences in protocols and secondary/substrate sensitivity.\.
Western blot: 0.5-1 µg/mL

Restrictions: For Research Use only

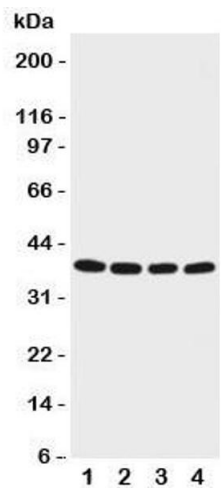
Handling

Buffer: 0.5 mg/mL if reconstituted with 0.2 mL sterile DI water

Storage: -20 °C

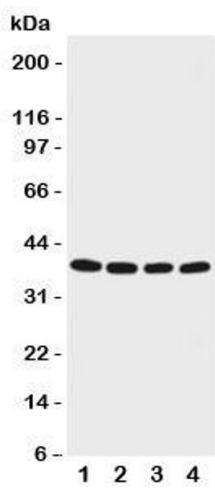
Storage Comment: After reconstitution, the EIF2B antibody can be stored for up to one month at 4°C. For long-term, aliquot and store at -20°C. Avoid repeated freezing and thawing.

Images



Western Blotting

Image 1. Western blot testing of EIF2B antibody and Lane 1: M451; 2: Jurkat; 3: HeLa; 4: 293T cell lysate. Expected/observed size ~38KD



Western Blotting

Image 2. Western blot testing of EIF2B antibody and Lane 1: M451