

Datasheet for ABIN3030889
anti-EIF2A antibody (AA 437-465)

5 Images

[Go to Product page](#)

Overview

Quantity:	0.4 mL
Target:	EIF2A
Binding Specificity:	AA 437-465
Reactivity:	Human
Host:	Rabbit
Clonality:	Polyclonal
Conjugate:	This EIF2A antibody is un-conjugated
Application:	Western Blotting (WB), Immunohistochemistry (IHC), ELISA, Flow Cytometry (FACS)

Product Details

Immunogen:	A portion of amino acids 437-465 from the human protein was used as the immunogen for this EIF2A antibody.
Isotype:	Ig Fraction
Purification:	Antigen affinity purified

Target Details

Target:	EIF2A
Alternative Name:	EIF2A (EIF2A Products)
Background:	EIF2A functions in the early steps of protein synthesis of a small number of specific mRNAs. Acts by directing the binding of methionyl-tRNAi to 40S ribosomal subunits. In contrast to the eIF-2 complex, it binds methionyl-tRNAi to 40 S subunits in a codon-dependent manner,

Target Details

whereas the eIF-2 complex binds methionyl-tRNAi to 40 S subunits in a GTP-dependent manner. May act by impiging the expression of specific proteins. [UniProt]

UniProt: [Q9BY44](#)

Pathways: [Ribonucleoprotein Complex Subunit Organization](#), [ER-Nucleus Signaling](#), [Hepatitis C](#), [Methionine Biosynthetic Process](#), [Ribosome Assembly](#)

Application Details

Application Notes: Titration of the EIF2A antibody may be required due to differences in protocols and secondary/substrate sensitivity.\. Western blot: 1:1000,IHC (Paraffin): 1:50-1:100,Flow Cytometry: 1:10-1:50

Restrictions: For Research Use only

Handling

Format: Liquid

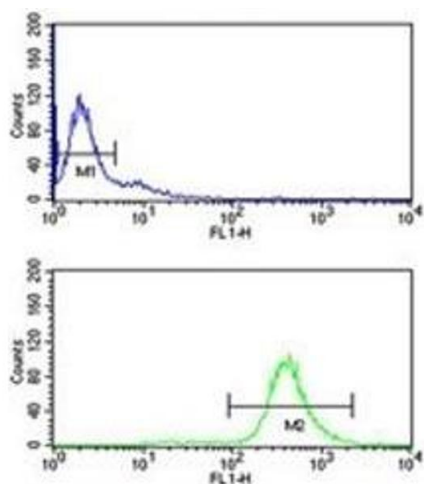
Buffer: In 1X PBS, pH 7.4, with 0.09 % sodium azide

Preservative: Sodium azide

Precaution of Use: This product contains Sodium azide: a POISONOUS AND HAZARDOUS SUBSTANCE which should be handled by trained staff only.

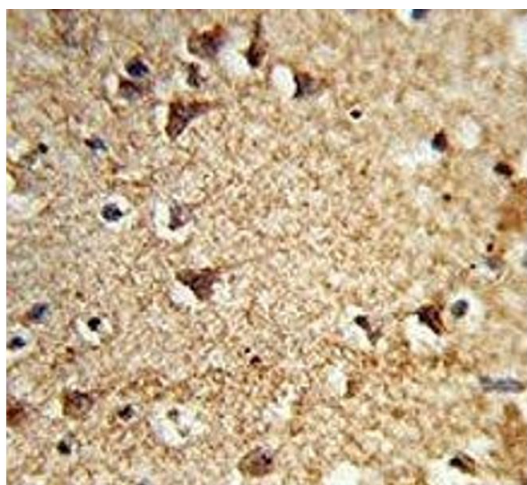
Storage: -20 °C

Storage Comment: Aliquot the EIF2A antibody and store frozen at -20°C or colder. Avoid repeated freeze-thaw cycles.



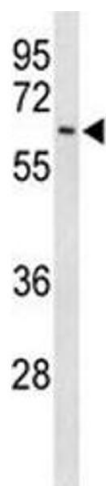
Flow Cytometry

Image 1. EIF2A antibody flow cytometry analysis of Ramos cells (bottom histogram) compared to a negative control (top histogram). FITC-conjugated goat-anti-rabbit secondary Ab was used for the analysis.



Immunohistochemistry

Image 2. IHC analysis of FFPE human brain tissue stained with EIF2A antibody



Western Blotting

Image 3. Western blot analysis of EIF2A antibody and Ramos lysate. Predicted molecular weight: 62, 58, 41 kDa.

Please check the [product details page](#) for more images. Overall 5 images are available for ABIN3030889.