

Datasheet for ABIN3030891

**anti-EIF4E antibody**

5 Images

[Go to Product page](#)

## Overview

Quantity:	0.4 mL
Target:	EIF4E
Reactivity:	Human
Host:	Rabbit
Clonality:	Polyclonal
Conjugate:	This EIF4E antibody is un-conjugated
Application:	Western Blotting (WB), Immunohistochemistry (IHC), ELISA, Flow Cytometry (FACS)

## Product Details

Immunogen:	This EIF4E antibody was produced from rabbits immunized with a recombinant protein from human VGFR2.
Isotype:	Ig Fraction
Purification:	Antigen affinity purified

## Target Details

Target:	EIF4E
Alternative Name:	EIF4E ( <a href="#">EIF4E Products</a> )
Background:	EIF4E is a eukaryotic translation initiation factor involved in directing ribosomes to the cap structure of mRNAs. It is a 27-kD polypeptide that exists as both a free form and as part of a multiprotein complex termed EIF4F. The EIF4E polypeptide is the rate-limiting component of the eukaryotic translation apparatus and is involved in the mRNA-ribosome binding step of

## Target Details

eukaryotic protein synthesis. The other subunits of EIF4F are a 50-kD polypeptide, termed EIF4A (see MIM 601102), that possesses ATPase and RNA helicase activities, and a 220-kD polypeptide, EIF4G.

UniProt: [P06730](#)

Pathways: [BCR Signaling](#)

## Application Details

Application Notes: Titration of the EIF4E antibody may be required due to differences in protocols and secondary/substrate sensitivity.\. Western blot: 1:1000,IHC (Paraffin): 1:50-1:100,Flow Cytometry: 1:10-1:50

Restrictions: For Research Use only

## Handling

Format: Liquid

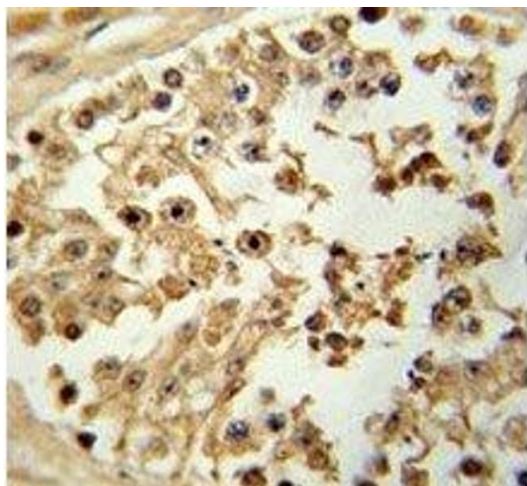
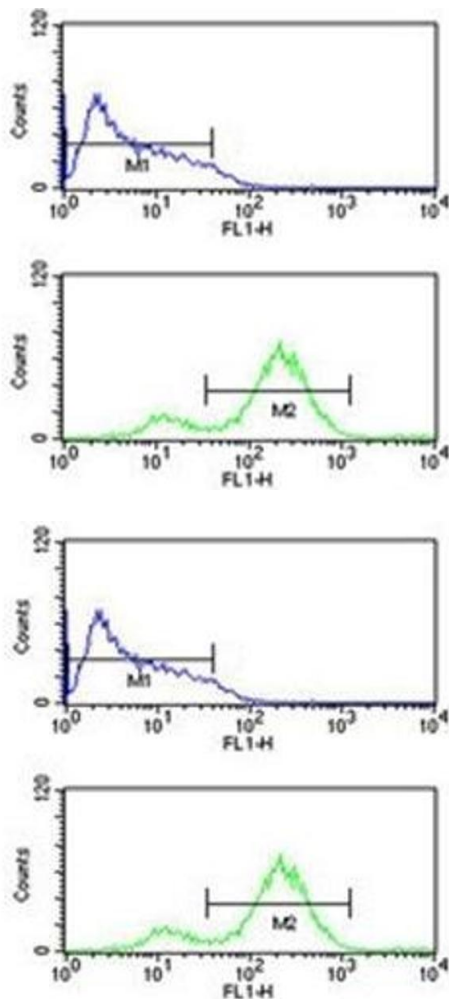
Buffer: In 1X PBS, pH 7.4, with 0.09 % sodium azide

Preservative: Sodium azide

Precaution of Use: This product contains Sodium azide: a POISONOUS AND HAZARDOUS SUBSTANCE which should be handled by trained staff only.

Storage: -20 °C

Storage Comment: Aliquot the EIF4E antibody and store frozen at -20°C or colder. Avoid repeated freeze-thaw cycles.



### Flow Cytometry

**Image 1.** EIF4E antibody flow cytometric analysis of HL-60 cells (bottom histogram) compared to a [negative control](#) (top histogram). FITC-conjugated goat-anti-rabbit secondary Ab was used for the analysis.

### Flow Cytometry

**Image 2.** EIF4E antibody flow cytometric analysis of HL-60 cells (bottom histogram) compared to a negative control (top histogram). FITC-conjugated goat-anti-rabbit secondary Ab was used for the analysis.

### Immunohistochemistry

**Image 3.** IHC analysis of FFPE human testis tissue stained with EIF4E antibody

Please check the [product details page](#) for more images. Overall 5 images are available for ABIN3030891.