

Datasheet for ABIN3030894
anti-EIF4E2 antibody (AA 12-41)[Go to Product page](#)

3 Images

Overview

Quantity:	0.4 mL
Target:	EIF4E2
Binding Specificity:	AA 12-41
Reactivity:	Human
Host:	Rabbit
Clonality:	Polyclonal
Conjugate:	This EIF4E2 antibody is un-conjugated
Application:	Western Blotting (WB), ELISA, Immunohistochemistry (IHC)

Product Details

Immunogen:	A portion of amino acids 12-41 from the human protein was used as the immunogen for this EIF4E2 antibody.
Isotype:	Ig Fraction
Purification:	Purified

Target Details

Target:	EIF4E2
Alternative Name:	EIF4E2 (EIF4E2 Products)
Background:	EIF4E2 is expressed exclusively in the cytoplasm. This protein recognizes and binds the 7 methylguanosine containing mRNA cap during an early step in the initiation of protein synthesis and facilitates ribosome binding by inducing the unwinding of the mRNAs secondary

Target Details

structures.

UniProt: [O60573](#)

Pathways: [SARS-CoV-2 Protein Interactome](#)

Application Details

Application Notes: The stated application concentrations are suggested starting amounts. Titration of the EIF4E2 antibody may be required due to differences in protocols and secondary/substrate sensitivity.\.
Western blot: 1:1000,IHC (Paraffin): 1:50-1:100

Restrictions: For Research Use only

Handling

Format: Liquid

Buffer: In 1X PBS, pH 7.4, with 0.09 % sodium azide

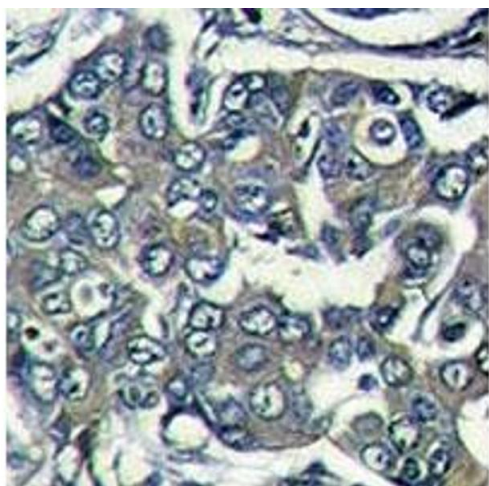
Preservative: Sodium azide

Precaution of Use: This product contains Sodium azide: a POISONOUS AND HAZARDOUS SUBSTANCE which should be handled by trained staff only.

Storage: -20 °C

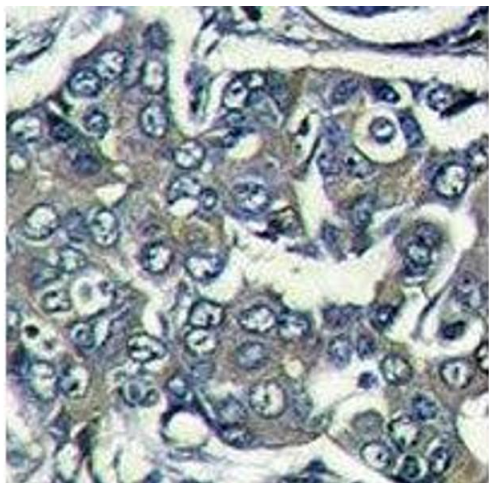
Storage Comment: Store at 4°C for up to one month. For long term, aliquot the EIF4E2 antibody and store frozen at -20°C or colder. Avoid repeated freeze-thaw cycles.

Images



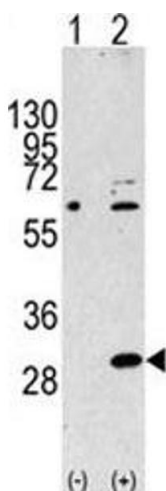
Immunohistochemistry

Image 1. IHC analysis of formalin fixed paraffin embedded human breast carcinoma stained with EIF4E2 antibody



Immunohistochemistry

Image 2. IHC analysis of formalin fixed paraffin embedded human breast carcinoma stained with EIF4E2 antibody



Western Blotting

Image 3. Western blot analysis of EIF4E2 antibody and 293 cell lysate either nontransfected (Lane 1) or transiently transfected with the EIF4E2 gene (2).