

Datasheet for ABIN3030896
anti-ERCC1 antibody (AA 268-297)[Go to Product page](#)

3 Images

Overview

Quantity:	0.4 mL
Target:	ERCC1
Binding Specificity:	AA 268-297
Reactivity:	Human, Mouse
Host:	Rabbit
Clonality:	Polyclonal
Conjugate:	This ERCC1 antibody is un-conjugated
Application:	Western Blotting (WB), ELISA

Product Details

Immunogen:	A portion of amino acids 268-297 from the human protein was used as the immunogen for this ERCC1 antibody.
Isotype:	Ig Fraction
Purification:	Antigen affinity purified

Target Details

Target:	ERCC1
Alternative Name:	ERCC1 (ERCC1 Products)
Background:	The product of this gene functions in the nucleotide excision repair pathway, and is required for the repair of DNA lesions such as those induced by UV light or formed by electrophilic compounds including cisplatin. The encoded protein forms a heterodimer with the XPF

Target Details

endonuclease (also known as ERCC4), and the heterodimeric endonuclease catalyzes the 5' incision in the process of excising the DNA lesion. The heterodimeric endonuclease is also involved in recombinational DNA repair and in the repair of inter-strand crosslinks. Mutations in this gene result in cerebrooculofacioskeletal syndrome, and polymorphisms that alter expression of this gene may play a role in carcinogenesis. Multiple transcript variants encoding different isoforms have been found for this gene. The last exon of this gene overlaps with the CD3e molecule, epsilon associated protein gene on the opposite strand.

UniProt: [P07992](#)

Pathways: [DNA Damage Repair](#), [Production of Molecular Mediator of Immune Response](#)

Application Details

Application Notes: Titration of the ERCC1 antibody may be required due to differences in protocols and secondary/substrate sensitivity.\. Western blot: 1:1000

Restrictions: For Research Use only

Handling

Format: Liquid

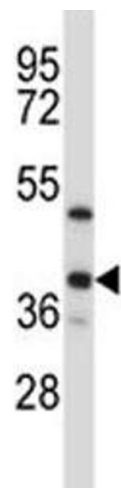
Buffer: In 1X PBS, pH 7.4, with 0.09 % sodium azide

Preservative: Sodium azide

Precaution of Use: This product contains Sodium azide: a POISONOUS AND HAZARDOUS SUBSTANCE which should be handled by trained staff only.

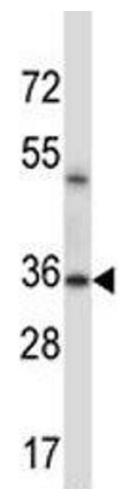
Storage: -20 °C

Storage Comment: Aliquot the ERCC1 antibody and store frozen at -20°C or colder. Avoid repeated freeze-thaw cycles.



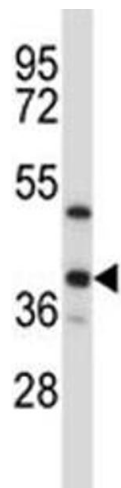
Western Blotting

Image 1. ERCC1 antibody western blot analysis in T47D lysate



Western Blotting

Image 2. ERCC1 antibody western blot analysis in mouse lung tissue lysate



Western Blotting

Image 3. ERCC1 antibody western blot analysis in T47D lysate