

Datasheet for ABIN3030897  
**anti-ERCC2 antibody (C-Term)**



[Go to Product page](#)

2 Images

## Overview

Quantity:	0.4 mL
Target:	ERCC2
Binding Specificity:	C-Term
Reactivity:	Human
Host:	Rabbit
Clonality:	Polyclonal
Conjugate:	This ERCC2 antibody is un-conjugated
Application:	Western Blotting (WB), ELISA

## Product Details

Immunogen:	This ERCC2 antibody was produced from a rabbit immunized with a KLH conjugated synthetic peptide between 687-722 amino acids from the C-terminal region of human ERCC2.
Isotype:	Ig Fraction
Purification:	Antigen affinity purified

## Target Details

Target:	ERCC2
Alternative Name:	ERCC2 ( <a href="#">ERCC2 Products</a> )
Background:	ATP-dependent 5'-3' DNA helicase, component of the core- TFIIH basal transcription factor. Involved in nucleotide excision repair (NER) of DNA by opening DNA around the damage, and in RNA transcription by RNA polymerase II by anchoring the CDK-activating kinase (CAK)

## Target Details

complex, composed of CDK7, cyclin H and MAT1, to the core-TFIID complex. Involved in the regulation of vitamin-D receptor activity. As part of the mitotic spindle-associated MMXD complex it plays a role in chromosome segregation. Might have a role in aging process and could play a causative role in the generation of skin cancers.

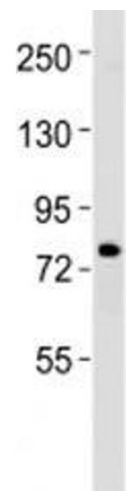
UniProt:	<a href="#">P18074</a>
Pathways:	<a href="#">DNA Damage Repair</a>

## Application Details

Application Notes:	Titration of the ERCC2 antibody may be required due to differences in protocols and secondary/substrate sensitivity.\. Western blot: 1:1000
Restrictions:	For Research Use only

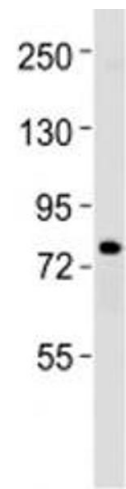
## Handling

Format:	Liquid
Buffer:	In 1X PBS, pH 7.4, with 0.09 % sodium azide
Preservative:	Sodium azide
Precaution of Use:	This product contains Sodium azide: a POISONOUS AND HAZARDOUS SUBSTANCE which should be handled by trained staff only.
Storage:	-20 °C
Storage Comment:	Aliquot the ERCC2 antibody and store frozen at -20°C or colder. Avoid repeated freeze-thaw cycles.



Western Blotting

**Image 1.** Western blot testing of ERCC2 antibody at 1:1000 dilution + K562 lysate



Western Blotting

**Image 2.** Western blot testing of ERCC2 antibody at 1:1000 dilution + K562 lysate