

Datasheet for ABIN3030906  
**anti-FAF1 antibody (N-Term)**[Go to Product page](#)

## 2 Images

## Overview

Quantity:	100 µg
Target:	FAF1
Binding Specificity:	N-Term
Reactivity:	Human, Mouse, Rat
Host:	Rabbit
Clonality:	Polyclonal
Conjugate:	This FAF1 antibody is un-conjugated
Application:	Western Blotting (WB)

## Product Details

Immunogen:	An amino acid sequence from the N-terminus of human FAF1 (MASNMDREMILADFQACTGIEN) was used as the immunogen for this FAF1 antibody (100% homologous in human, mouse and rat).
Isotype:	IgG
Purification:	Antigen affinity

## Target Details

Target:	FAF1
Alternative Name:	FAF1 ( <a href="#">FAF1 Products</a> )
Background:	Fas-associated factor-1(FAF1) is a Fas-binding pro-apoptotic protein that is a component of the death-inducing signaling complex in Fas-mediated apoptosis. FAF1 is involved in negative

## Target Details

regulation of NF-kappaB activation. In addition to the previously known function as a component of the Fas death-inducing signaling complex, i.e. NF-kappaB activity suppressor by cytoplasmic retention of NF-kappaB p65 via physical interaction. hFAF1 was expressed abundantly in testis, skeletal muscle, and heart as 2.8 kb mRNA. Polyclonal antibody against hFAF1 detected 74 kD protein, a deduced protein size from the ORF and 40 kD protein in some cell lines.

UniProt: [Q9UNN5](#)

Pathways: [Maintenance of Protein Location](#)

## Application Details

Application Notes: The stated application concentrations are suggested starting amounts. Titration of the FAF1 antibody may be required due to differences in protocols and secondary/substrate sensitivity.\. Western blot: 0.5-1 µg/mL

Restrictions: For Research Use only

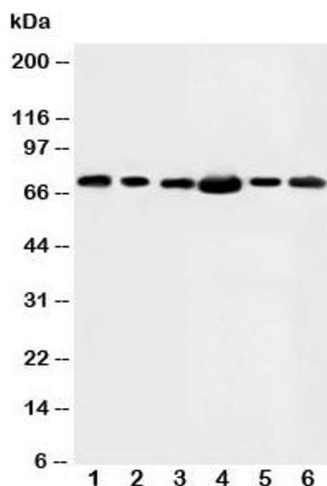
## Handling

Buffer: 0.5 mg/mL if reconstituted with 0.2 mL sterile DI water

Storage: -20 °C

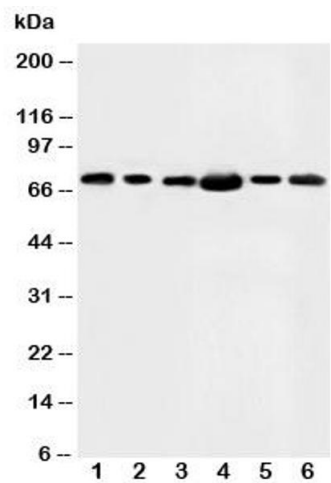
Storage Comment: After reconstitution, the FAF1 antibody can be stored for up to one month at 4°C. For long-term, aliquot and store at -20°C. Avoid repeated freezing and thawing.

## Images



### Western Blotting

**Image 1.** Western blot testing of FAF1 antibody and Lane 1: rat testis; 2: MM453; 3: MM231; 4: HeLa; 5: SMMC-7721; 6: SW620



Western Blotting

**Image 2.** Western blot testing of FAF1 antibody and Lane 1: rat testis