

Datasheet for ABIN3030930
anti-FGF1 antibody (AA 5-30)

5 Images

[Go to Product page](#)

Overview

Quantity:	0.4 mL
Target:	FGF1
Binding Specificity:	AA 5-30
Reactivity:	Human
Host:	Rabbit
Clonality:	Polyclonal
Conjugate:	This FGF1 antibody is un-conjugated
Application:	Western Blotting (WB), Immunohistochemistry (IHC), ELISA, Immunofluorescence (IF)

Product Details

Immunogen:	A portion of amino acids 5-30 from the human protein was used as the immunogen for this FGF1 antibody.
Isotype:	Ig Fraction
Cross-Reactivity (Details):	Expected species reactivity: Pig
Purification:	Purified

Target Details

Target:	FGF1
Alternative Name:	FGF1 (FGF1 Products)
Background:	FGF1 is a member of the fibroblast growth factor (FGF) family. FGF family members possess

Target Details

broad mitogenic and cell survival activities, and are involved in a variety of biological processes, including embryonic development, cell growth, morphogenesis, tissue repair, tumor growth and invasion. This protein functions as a modifier of endothelial cell migration and proliferation, as well as an angiogenic factor. It acts as a mitogen for a variety of mesoderm- and neuroectoderm-derived cells in vitro, thus is thought to be involved in organogenesis.

UniProt: [P05230](#)

Pathways: [RTK Signaling](#), [Fc-epsilon Receptor Signaling Pathway](#), [EGFR Signaling Pathway](#), [Neurotrophin Signaling Pathway](#)

Application Details

Application Notes: Titration of the FGF1 antibody may be required due to differences in protocols and secondary/substrate sensitivity.\. Western blot: 1:1000,IHC (Paraffin): 1:10-1:50,Immunofluorescence: 1:10-1:50

Restrictions: For Research Use only

Handling

Format: Liquid

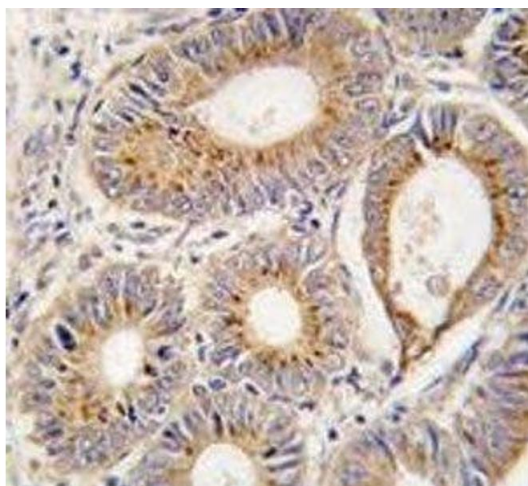
Buffer: In 1X PBS, pH 7.4, with 0.09 % sodium azide

Preservative: Sodium azide

Precaution of Use: This product contains Sodium azide: a POISONOUS AND HAZARDOUS SUBSTANCE which should be handled by trained staff only.

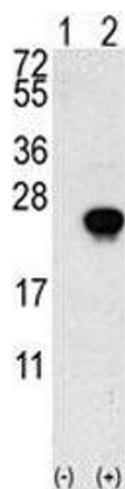
Storage: -20 °C

Storage Comment: Aliquot the FGF1 antibody and store frozen at -20°C or colder. Avoid repeated freeze-thaw cycles.



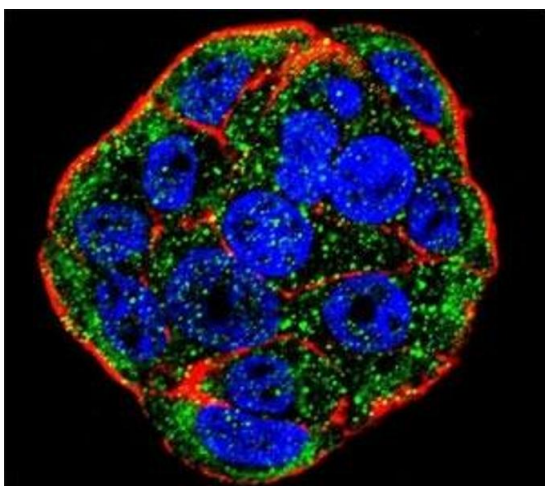
Immunohistochemistry

Image 1. IHC analysis of FFPE human colon carcinoma tissue stained with FGF1 antibody



Western Blotting

Image 2. Western blot analysis of FGF1 antibody and 293 cell lysate (2 ug/lane) either nontransfected (Lane 1) or transiently transfected with the FGF1 gene (2).



Immunofluorescence

Image 3. Confocal immunofluorescent analysis of FGF1 antibody with WiDr cells followed by Alexa Fluor 488-conjugated goat anti-rabbit IgG (green). Actin filaments have been labeled with Alexa Fluor 555 Phalloidin (red). DAPI was used as a nuclear counterstain (blue).

Please check the [product details page](#) for more images. Overall 5 images are available for ABIN3030930.