

Datasheet for ABIN3030945
anti-FGFR1 antibody (AA 19-48)

6 Images



[Go to Product page](#)

Overview

Quantity:	0.4 mL
Target:	FGFR1
Binding Specificity:	AA 19-48
Reactivity:	Human, Mouse
Host:	Rabbit
Clonality:	Polyclonal
Conjugate:	This FGFR1 antibody is un-conjugated
Application:	Western Blotting (WB), ELISA, Immunohistochemistry (IHC), Immunofluorescence (IF), Flow Cytometry (FACS)

Product Details

Immunogen:	A portion of amino acids 19-48 from the human protein was used as the immunogen for this FGFR1 antibody.
Isotype:	Ig Fraction
Purification:	Purified

Target Details

Target:	FGFR1
Alternative Name:	FGFR1 (FGFR1 Products)
Background:	FGFR family members differ from one another in their ligand affinities and tissue distribution. A full-length representative protein consists of an extracellular region, composed of three

Target Details

immunoglobulin-like domains, a single hydrophobic membrane-spanning segment and a cytoplasmic tyrosine kinase domain. The extracellular portion of the protein interacts with fibroblast growth factors, setting in motion a cascade of downstream signals, ultimately influencing mitogenesis and differentiation. This particular family member binds both acidic and basic fibroblast growth factors and is involved in limb induction. Mutations in this gene can lead to Pfeiffer syndrome and Jackson-Weiss syndrome. The genomic organization of the gene is very similar to family members 2-4, encompassing 19 exons that are subject to complex alternative splicing, which allows for structural, tissue expression and ligand affinity variations among the isoforms.

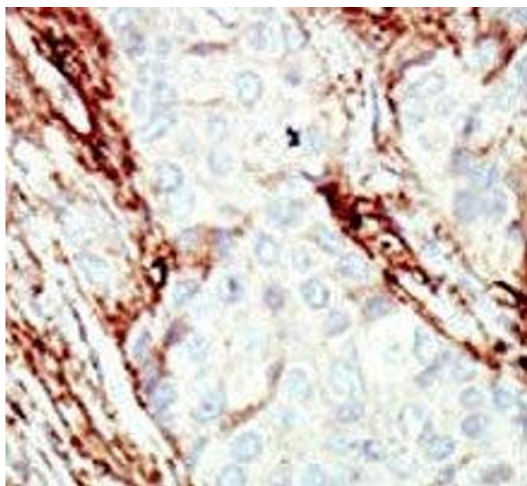
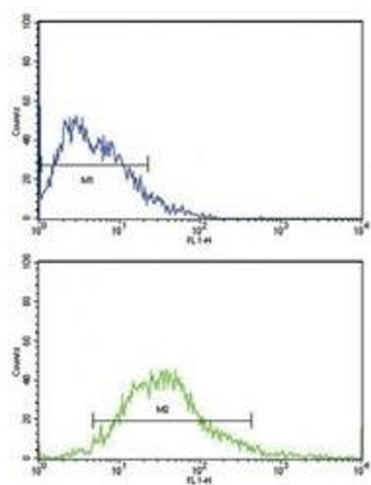
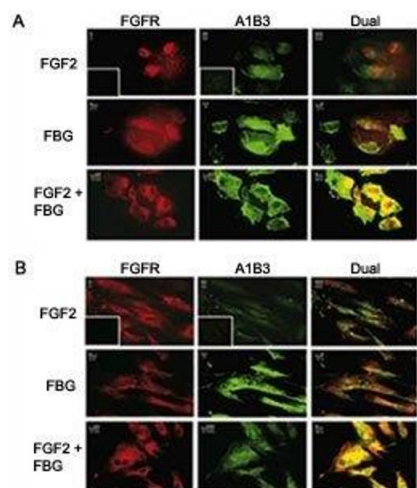
UniProt:	P11362
Pathways:	RTK Signaling , Fc-epsilon Receptor Signaling Pathway , EGFR Signaling Pathway , Neurotrophin Signaling Pathway , Sensory Perception of Sound , Stem Cell Maintenance , S100 Proteins

Application Details

Application Notes:	Titration of the FGFR1 antibody may be required due to differences in protocols and secondary/substrate sensitivity.\. Flow Cytometry: 1:10-1:50,Western blot: 1:1000,IHC (Paraffin): 1:50-1:100,Immunofluorescence: 1:50-1:100
Restrictions:	For Research Use only

Handling

Format:	Liquid
Buffer:	In 1X PBS, pH 7.4, with 0.09 % sodium azide
Preservative:	Sodium azide
Precaution of Use:	This product contains Sodium azide: a POISONOUS AND HAZARDOUS SUBSTANCE which should be handled by trained staff only.
Storage:	-20 °C
Storage Comment:	Aliquot the FGFR1 antibody and store frozen at -20°C or colder. Avoid repeated freeze-thaw cycles.



Immunofluorescence

Image 1. Colocalization of A1B3 and FGFR1 using IF. Confluent ECs (A) or HFFs (B) were treated with or without 100 ng/mL FGF2 in the presence or absence of 10/mL fibrinogen. After 1 hour, cells were washed and fixed with 3.7% formaldehyde and stained using 7E3 and

Flow Cytometry

Image 2. Flow cytometric analysis of MCF-7 cells using FGFR1 antibody (bottom histogram) compared to a negative control (top histogram). FITC-conjugated goat-anti-rabbit secondary Ab was used for the analysis.

Immunohistochemistry

Image 3. IHC analysis of FFPE human breast carcinoma tissue stained with the FGFR1 antibody

Please check the [product details page](#) for more images. Overall 6 images are available for ABIN3030945.