



[Go to Product page](#)

Datasheet for ABIN3030967

anti-Fission 1 antibody (N-Term)

3 Images

Overview

Quantity:	0.4 mL
Target:	Fission 1 (FIS1)
Binding Specificity:	N-Term
Reactivity:	Human, Mouse, Rat
Host:	Rabbit
Clonality:	Polyclonal
Conjugate:	This Fission 1 antibody is un-conjugated
Application:	Western Blotting (WB), ELISA

Product Details

Immunogen:	This FIS1 antibody was produced from a rabbit immunized with a KLH conjugated synthetic peptide between 6-40 amino acids from the N-terminal region of human FIS1.
Isotype:	Ig Fraction
Purification:	Antigen affinity purified

Target Details

Target:	Fission 1 (FIS1)
Alternative Name:	FIS1 (FIS1 Products)
Background:	Involved in the fragmentation of the mitochondrial network and its perinuclear clustering. Plays a minor role in the recruitment and association of the fission mediator dynamin- related protein 1 (DNM1L) to the mitochondrial surface and mitochondrial fission. Can induce cytochrome c

Target Details

release from the mitochondrion to the cytosol, ultimately leading to apoptosis. Also mediates peroxisomal fission.

UniProt: [Q9Y3D6](#)

Pathways: [Positive Regulation of Endopeptidase Activity](#)

Application Details

Application Notes: Titration of the FIS1 antibody may be required due to differences in protocols and secondary/substrate sensitivity.\. Western blot: 1:1000

Restrictions: For Research Use only

Handling

Format: Liquid

Buffer: In 1X PBS, pH 7.4, with 0.09 % sodium azide

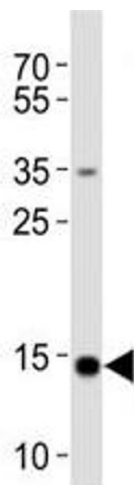
Preservative: Sodium azide

Precaution of Use: This product contains Sodium azide: a POISONOUS AND HAZARDOUS SUBSTANCE which should be handled by trained staff only.

Storage: -20 °C

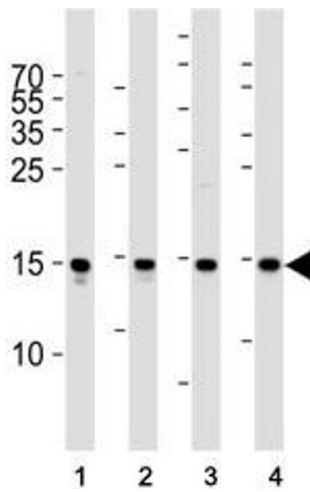
Storage Comment: Aliquot the FIS1 antibody and store frozen at -20°C or colder. Avoid repeated freeze-thaw cycles.

Images



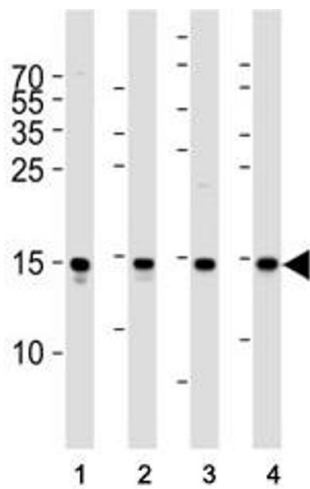
Western Blotting

Image 1. Western blot analysis of lysate from HeLa cell line using FIS1 antibody diluted at 1:1000.



Western Blotting

Image 2. Western blot analysis of lysate from (1) Raji cell line, (2) human spleen, (3) mouse brain and (4) rat brain tissue lysate using FIS1 antibody at 1:1000.



Western Blotting

Image 3. Western blot analysis of lysate from (1) Raji cell line, (2) human spleen, (3) mouse brain and (4) rat brain tissue lysate using FIS1 antibody at 1:1000.