

Datasheet for ABIN3030975
anti-FLT3 antibody (AA 33-64)

5 Images

[Go to Product page](#)

Overview

Quantity:	0.4 mL
Target:	FLT3
Binding Specificity:	AA 33-64
Reactivity:	Human
Host:	Rabbit
Clonality:	Polyclonal
Conjugate:	This FLT3 antibody is un-conjugated
Application:	Western Blotting (WB), ELISA, Immunohistochemistry (IHC), Flow Cytometry (FACS)

Product Details

Immunogen:	A portion of amino acids 33-64 from the human protein was used as the immunogen for this FLT3 antibody.
Isotype:	Ig Fraction
Purification:	Purified

Target Details

Target:	FLT3
Alternative Name:	FLT3 (FLT3 Products)
Background:	Protein kinases are enzymes that transfer a phosphate group from a phosphate donor, generally the γ phosphate of ATP, onto an acceptor amino acid in a substrate protein. By this basic mechanism, protein kinases mediate most of the signal transduction in eukaryotic cells,

Target Details

regulating cellular metabolism, transcription, cell cycle progression, cytoskeletal rearrangement and cell movement, apoptosis, and differentiation. With more than 500 gene products, the protein kinase family is one of the largest families of proteins in eukaryotes. The family has been classified in 8 major groups based on sequence comparison of their tyrosine (PTK) or serine/threonine (STK) kinase catalytic domains. The tyrosine kinase (TK) group is mainly involved in the regulation of cell-cell interactions such as differentiation, adhesion, motility and death. There are currently about 90 TK genes sequenced, 58 are of receptor protein TK (e.g. EGFR, EPH, FGFR, PDGFR, TRK, and VEGFR families), and 32 of cytosolic TK (e.g. ABL, FAK, JAK, and SRC families).

UniProt: [P36888](#)

Pathways: [RTK Signaling](#)

Application Details

Application Notes: Titration of the FLT3 antibody may be required due to differences in protocols and secondary/substrate sensitivity.\. Flow Cytometry: 1:10-1:50,Western blot: 1:1000,IHC (Paraffin): 1:50-1:100

Restrictions: For Research Use only

Handling

Format: Liquid

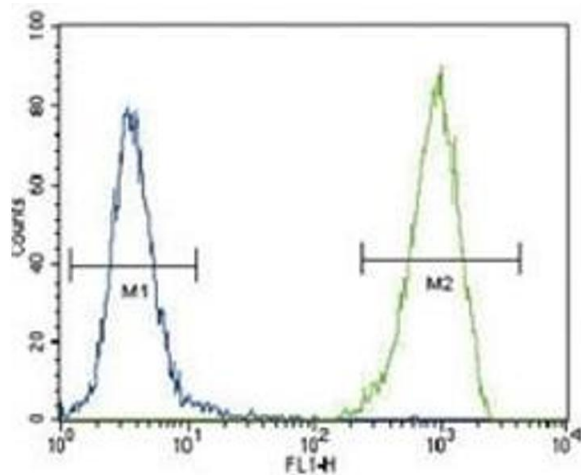
Buffer: In 1X PBS, pH 7.4, with 0.09 % sodium azide

Preservative: Sodium azide

Precaution of Use: This product contains Sodium azide: a POISONOUS AND HAZARDOUS SUBSTANCE which should be handled by trained staff only.

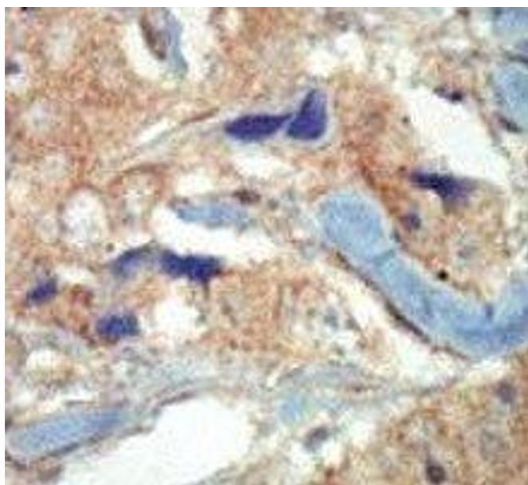
Storage: -20 °C

Storage Comment: Aliquot the FLT3 antibody and store frozen at -20°C or colder. Avoid repeated freeze-thaw cycles.



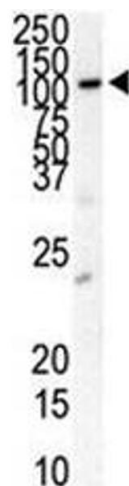
Flow Cytometry

Image 1. FLT3 antibody flow cytometric analysis of 293 cells (right histogram) compared to a negative control (left histogram). FITC-conjugated goat-anti-rabbit secondary Ab was used for the analysis.



Immunohistochemistry

Image 2. IHC analysis of FFPE human breast carcinoma tissue stained with the FLT3 antibody



Western Blotting

Image 3. Western blot analysis of anti-FLT3 antibody and HL-60 cell lysate

Please check the [product details page](#) for more images. Overall 5 images are available for ABIN3030975.