



[Go to Product page](#)

Datasheet for ABIN3030978

## anti-PSMA antibody (AA 161-190)

### 5 Images

#### Overview

Quantity:	0.4 mL
Target:	PSMA (FOLH1)
Binding Specificity:	AA 161-190
Reactivity:	Human
Host:	Rabbit
Clonality:	Polyclonal
Conjugate:	This PSMA antibody is un-conjugated
Application:	Western Blotting (WB), Immunohistochemistry (IHC), ELISA, Immunofluorescence (IF)

#### Product Details

Immunogen:	A portion of amino acids 161-190 from the human protein was used as the immunogen for this PSMA antibody.
Isotype:	Ig Fraction
Cross-Reactivity (Details):	Expected species reactivity: Mouse, Rat, Pig
Purification:	Antigen affinity purified

#### Target Details

Target:	PSMA (FOLH1)
Alternative Name:	PSMA ( <a href="#">FOLH1 Products</a> )
Background:	GCPII is a zinc metalloenzyme that resides in membranes. Most of the enzyme resides in the

## Target Details

---

extracellular space. GCPII is a class II membrane glycoprotein. It catalyzes the hydrolysis of N-acetylaspartylglutamate (NAAG) to glutamate and N-acetylaspartate (NAA). Neuroscientists primarily use the term NAALADase in their studies, while those studying folate metabolism use folate hydrolase, and those studying prostate cancer or oncology, PSMA. All of which refer to the same protein, glutamate carboxypeptidase II. PSMA is strongly expressed in the human prostate, being a hundredfold greater than the expression in most other tissues. In cancer, it is upregulated in expression and has been called the second-most-upregulated gene in prostate cancer, with increase of 8- to 12-fold over the noncancerous prostate. In human prostate cancer, the higher expressing tumors are associated with quicker time to progression and a greater percentage of patients suffering relapse. [Wiki]

UniProt: [Q04609](#)

## Application Details

---

Application Notes: Titration of the PSMA antibody may be required due to differences in protocols and secondary/substrate sensitivity.\. Western blot: 1:1000,IHC (Paraffin): 1:10-1:50,Immunofluorescence: 1:10-1:50

Restrictions: For Research Use only

## Handling

---

Format: Liquid

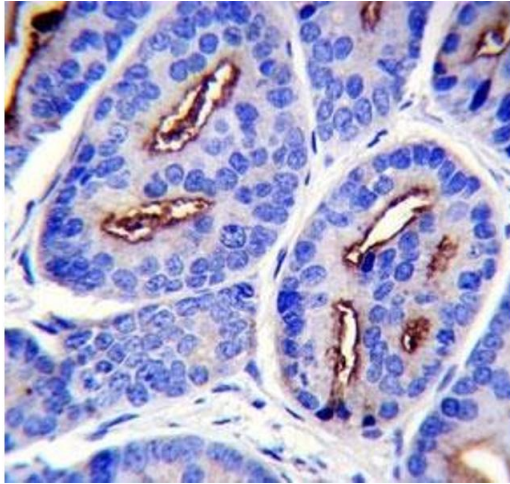
Buffer: In 1X PBS, pH 7.4, with 0.09 % sodium azide

Preservative: Sodium azide

Precaution of Use: This product contains Sodium azide: a POISONOUS AND HAZARDOUS SUBSTANCE which should be handled by trained staff only.

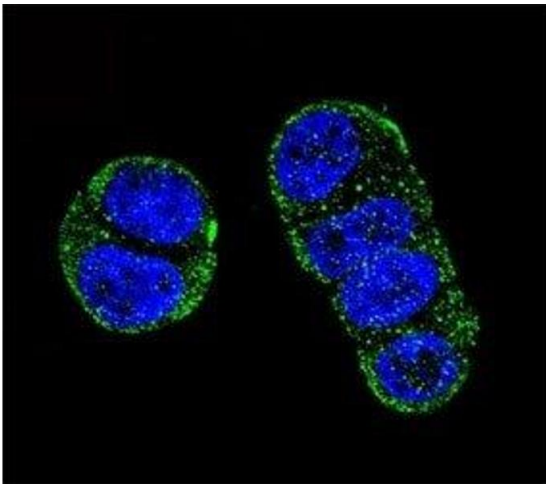
Storage: -20 °C

Storage Comment: Aliquot the PSMA antibody and store frozen at -20°C or colder. Avoid repeated freeze-thaw cycles.



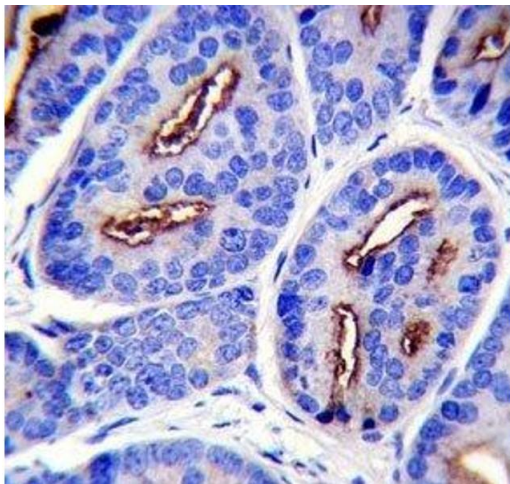
#### Immunohistochemistry

**Image 1.** PSMA antibody immunohistochemistry analysis in formalin fixed and paraffin embedded human prostate carcinoma.



#### Immunofluorescence

**Image 2.** Confocal immunofluorescent analysis of PSMA antibody with ZR-75-1 cells followed by Alexa Fluor 488-conjugated goat anti-rabbit IgG (green). DAPI was used as a nuclear counterstain (blue).



#### Immunohistochemistry

**Image 3.** PSMA antibody immunohistochemistry analysis in formalin fixed and paraffin embedded human prostate carcinoma.

Please check the [product details page](#) for more images. Overall 5 images are available for ABIN3030978.