

Datasheet for ABIN3030987  
**anti-FOXG1 antibody (AA 225-252)**

## 5 Images

[Go to Product page](#)

## Overview

Quantity:	0.4 mL
Target:	FOXG1
Binding Specificity:	AA 225-252
Reactivity:	Human, Mouse
Host:	Rabbit
Clonality:	Polyclonal
Conjugate:	This FOXG1 antibody is un-conjugated
Application:	Western Blotting (WB), ELISA, Flow Cytometry (FACS), Immunofluorescence (IF)

## Product Details

Immunogen:	A portion of amino acids 225-252 from the human protein was used as the immunogen for this FOXG1 antibody.
Isotype:	Ig Fraction
Cross-Reactivity (Details):	Expected species reactivity: Rat, Chicken, Xenopus, Drosophila
Purification:	Antigen affinity purified

## Target Details

Target:	FOXG1
Alternative Name:	FOXG1 ( <a href="#">FOXG1 Products</a> )
Background:	This gene belongs to the forkhead family of transcription factors which is characterized by a

## Target Details

distinct forkhead domain. The specific function of this gene has not yet been determined, however, it may play a role in the development of the brain and telencephalon.

UniProt: [P55316](#)

## Application Details

Application Notes: Titration of the FOXG1 antibody may be required due to differences in protocols and secondary/substrate sensitivity.\. Western blot: 1:1000,Flow Cytometry: 1:10-1:50,Immunofluorescence: 1:10-1:50

Restrictions: For Research Use only

## Handling

Format: Liquid

Buffer: In 1X PBS, pH 7.4, with 0.09 % sodium azide

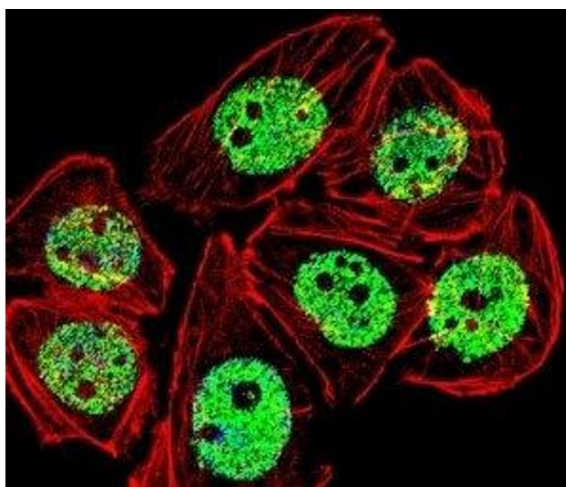
Preservative: Sodium azide

Precaution of Use: This product contains Sodium azide: a POISONOUS AND HAZARDOUS SUBSTANCE which should be handled by trained staff only.

Storage: -20 °C

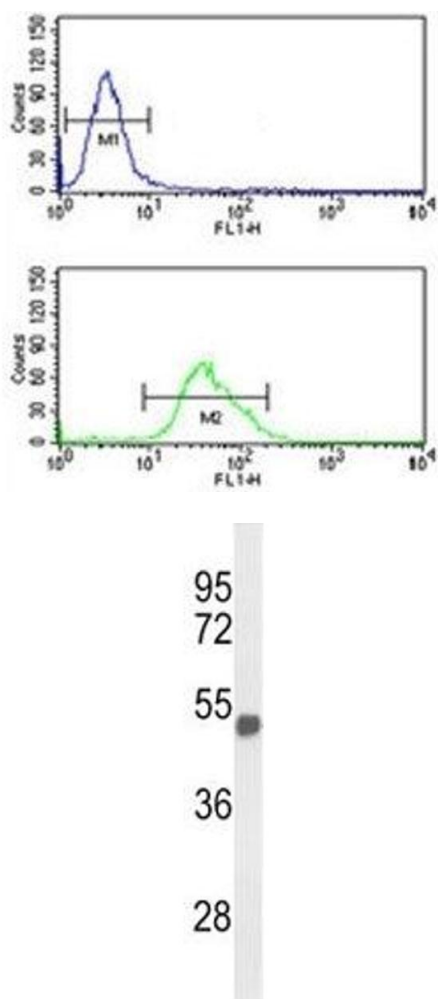
Storage Comment: Aliquot the FOXG1 antibody and store frozen at -20°C or colder. Avoid repeated freeze-thaw cycles.

## Images



### Immunofluorescence

**Image 1.** Fluorescent confocal image of A549 cells stained with FOXG1 antibody. Alexa Fluor 488 secondary was used (green). Cytoplasmic actin was counterstained with Alexa Fluor 555 (red) conjugated Phalloidin. FOXG1 immunoreactivity is localized to the nucleus.



### Flow Cytometry

**Image 2.** FOXG1 antibody flow cytometric analysis of U251 cells (green) compared to a negative control (blue). FITC-conjugated goat-anti-rabbit secondary Ab was used for the analysis.

### Western Blotting

**Image 3.** Western blot analysis of FOXG1 antibody and mouse brain tissue lysate. Predicted molecular weight ~ 52 kDa.

Please check the [product details page](#) for more images. Overall 5 images are available for ABIN3030987.