

Datasheet for ABIN3030993
anti-FOXP1 antibody (AA 650-677)[Go to Product page](#)

7 Images

Overview

Quantity:	0.4 mL
Target:	FOXP1
Binding Specificity:	AA 650-677
Reactivity:	Human
Host:	Rabbit
Clonality:	Polyclonal
Conjugate:	This FOXP1 antibody is un-conjugated
Application:	Western Blotting (WB), ELISA, Immunohistochemistry (IHC), Flow Cytometry (FACS)

Product Details

Immunogen:	A portion of amino acids 650-677 from the human protein was used as the immunogen for this FOXP1 antibody.
Isotype:	Ig Fraction
Cross-Reactivity (Details):	Expected species reactivity: Mouse, Rat, Bovine
Purification:	Antigen affinity purified

Target Details

Target:	FOXP1
Alternative Name:	FOXP1 (FOXP1 Products)
Background:	This gene belongs to subfamily P of the forkhead box (FOX) transcription factor family.

Target Details

Forkhead box transcription factors play important roles in the regulation of tissue- and cell type-specific gene transcription during both development and adulthood. Forkhead box P1 protein contains both DNA-binding- and protein-protein binding-domains. This gene may act as a tumor suppressor as it is lost in several tumor types and maps to a chromosomal region (3p14.1) reported to contain a tumor suppressor gene(s).

UniProt: [Q9H334](#)

Pathways: [Chromatin Binding](#), [Regulation of Muscle Cell Differentiation](#), [Positive Regulation of Immune Effector Process](#), [Production of Molecular Mediator of Immune Response](#)

Application Details

Application Notes: Titration of the FOXP1 antibody may be required due to differences in protocols and secondary/substrate sensitivity.\. Western blot: 1:1000,IHC (Paraffin): 1:25-1:100,Flow Cytometry: 1:10-1:50

Restrictions: For Research Use only

Handling

Format: Liquid

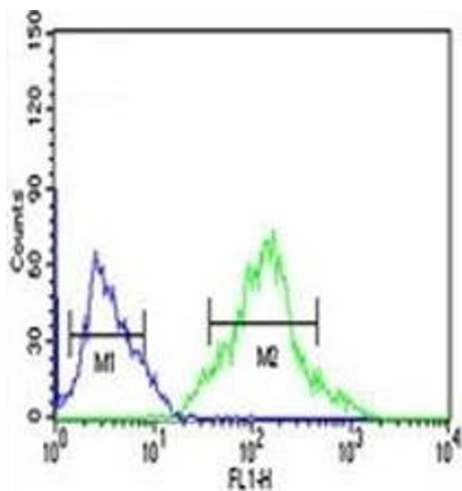
Buffer: In 1X PBS pH 7.4 with 0.09 % sodium azide

Preservative: Sodium azide

Precaution of Use: This product contains Sodium azide: a POISONOUS AND HAZARDOUS SUBSTANCE which should be handled by trained staff only.

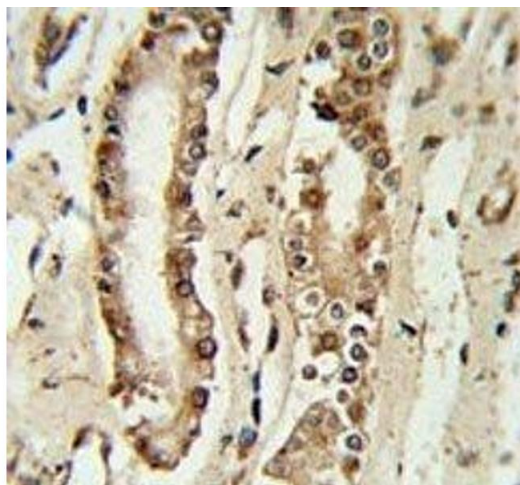
Storage: -20 °C

Storage Comment: Aliquot the FOXP1 antibody and store frozen at -20°C or colder. Avoid repeated freeze-thaw cycles.



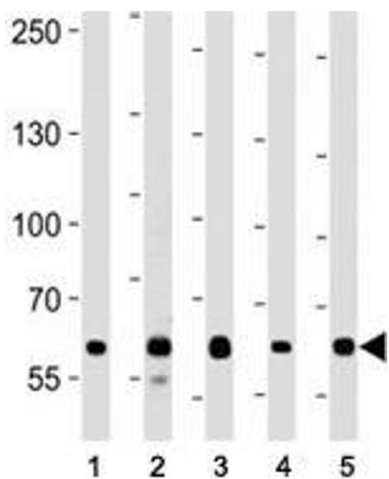
Flow Cytometry

Image 1. FOXP1 antibody flow cytometric analysis of Ramos cells (right histogram) compared to negative control cells (left histogram). FITC-conjugated goat-anti-rabbit secondary Ab was used for the analysis.



Immunohistochemistry

Image 2. FOXP1 antibody IHC analysis in formalin fixed and paraffin embedded lung tissue.



Western Blotting

Image 3. FOXP1 antibody western blot analysis in (1) A549, (2) Daudi, (3) Jurkat, (4) MCF-7, and (5) NCI-H292 lysate

Please check the [product details page](#) for more images. Overall 7 images are available for ABIN3030993.