

Datasheet for ABIN303100

anti-Glycogen Synthase antibody (pSer641)[Go to Product page](#)**1** Image

Overview

Quantity:	50 µg
Target:	Glycogen Synthase (GYS)
Binding Specificity:	pSer641
Reactivity:	Human, Mouse
Host:	Rabbit
Clonality:	Polyclonal
Conjugate:	This Glycogen Synthase antibody is un-conjugated
Application:	Western Blotting (WB), Enzyme Immunoassay (EIA), Immunoprecipitation (IP), Immunohistochemistry (Paraffin-embedded Sections) (IHC (p))

Product Details

Immunogen:	Human Muscle Glycogen Synthase phospho peptide corresponding to a region of the human protein conjugated to Keyhole Limpet Hemocyanin (KLH).
Specificity:	This antibody is specific for the phosphorylated form of GS at S640. Phosphorylation of GS at S640 has been associated with Antiphospholipid Antibody Syndrome.
Purification:	Immunoaffinity Chromatography.

Target Details

Target:	Glycogen Synthase (GYS)
Alternative Name:	Glycogen Synthase (GYS Products)
Background:	Human muscle glycogen synthase (GS) is responsible for the biosynthesis of glycogen from

Target Details

phosphorylated glucose units. Mammalian liver and muscle contain GS consisting of four subunits with a total molecular weight of 360,000. GS is subject to regulation through both allosteric and covalent modification and occurs in two forms: the phosphorylated inactive form, and the dephosphorylated active form. GS is inactivated by the serine/threonine kinase called glycogen synthase kinase-3 β that mainly functions to phosphorylate muscle glycogen synthase. Synonyms: GYS, GYS1, muscle Glycogen Synthase

Gene ID: 2997

NCBI Accession: [NP_001155059](#)

UniProt: [P13807](#)

Application Details

Application Notes: Immunohistochemistry on Paraffin Sections (5 μ g/mL). Western Blot. Immunoprecipitation. ELISA.
Other applications not tested.
Optimal dilutions are dependent on conditions and should be determined by the user.

Restrictions: For Research Use only

Handling

Concentration: 1.0 mg/mL

Buffer: 0.02 M Potassium Phosphate, 0.15 M Sodium Chloride, pH 7.2 with 0.01 % (w/v) Sodium Azide as preservative.

Preservative: Sodium azide

Precaution of Use: This product contains sodium azide: a POISONOUS AND HAZARDOUS SUBSTANCE which should be handled by trained staff only.

Handling Advice: Avoid repeated freezing and thawing.

Storage: 4 °C/-20 °C

Storage Comment: Store the antibody undiluted at 2-8 °C for one month or (in aliquots) at -20 °C for longer.

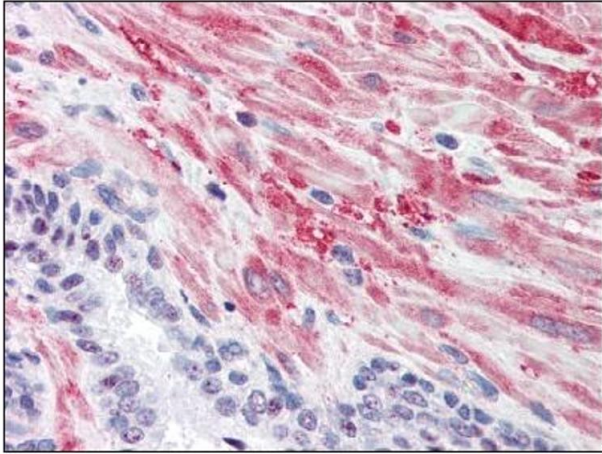


Image 1.