

Datasheet for ABIN3031029
anti-GATA2 antibody (AA 262-288)



[Go to Product page](#)

3 Images

Overview

| | |
|----------------------|---|
| Quantity: | 0.4 mL |
| Target: | GATA2 |
| Binding Specificity: | AA 262-288 |
| Reactivity: | Human |
| Host: | Rabbit |
| Clonality: | Polyclonal |
| Conjugate: | This GATA2 antibody is un-conjugated |
| Application: | Western Blotting (WB), ELISA, Flow Cytometry (FACS) |

Product Details

| | |
|-----------------------------|--|
| Immunogen: | A portion of amino acids 262-288 from the human protein was used as the immunogen for this GATA2 antibody. |
| Isotype: | Ig Fraction |
| Cross-Reactivity (Details): | Expected species reactivity: Mouse, Rat |
| Purification: | Purified |

Target Details

| | |
|-------------------|--|
| Target: | GATA2 |
| Alternative Name: | GATA2 (GATA2 Products) |
| Background: | GATA2 is a member of the GATA family of zinc-finger transcription factors that are named for |

Target Details

the consensus nucleotide sequence they bind in the promoter regions of target genes. This protein plays an essential role in regulating transcription of genes involved in the development and proliferation of hematopoietic and endocrine cell lineages.

| | |
|-----------|-----------------------|
| UniProt: | P23769 |
| Pathways: | Stem Cell Maintenance |

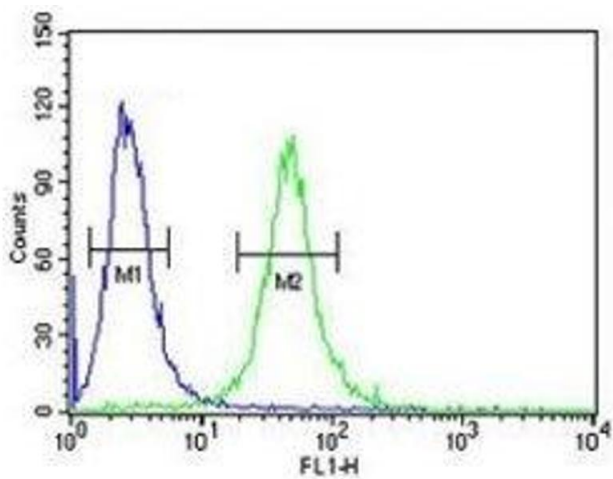
Application Details

| | |
|--------------------|---|
| Application Notes: | Titration of the GATA2 antibody may be required due to differences in protocols and secondary/substrate sensitivity.\. Western blot: 1:1000,Flow Cytometry: 1:10-1:50 |
| Restrictions: | For Research Use only |

Handling

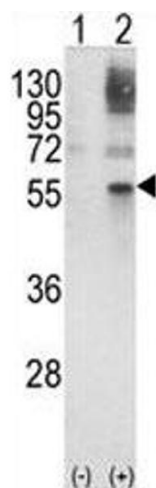
| | |
|--------------------|--|
| Format: | Liquid |
| Buffer: | In 1X PBS, pH 7.4, with 0.09 % sodium azide |
| Preservative: | Sodium azide |
| Precaution of Use: | This product contains Sodium azide: a POISONOUS AND HAZARDOUS SUBSTANCE which should be handled by trained staff only. |
| Storage: | -20 °C |
| Storage Comment: | Aliquot the GATA2 antibody and store frozen at -20°C or colder. Avoid repeated freeze-thaw cycles. |

Images



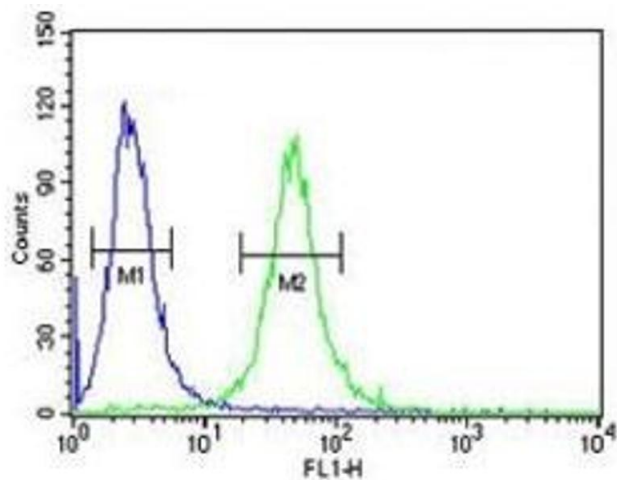
Flow Cytometry

Image 1. GATA2 antibody flow cytometric analysis of 293 cells (green) compared to a negative control (blue). FITC-conjugated goat-anti-rabbit secondary Ab was used for the analysis.



Western Blotting

Image 2. Western blot analysis of GATA2 antibody and 293 cell lysate either nontransfected (Lane 1) or transiently transfected with the GATA2 gene (2). Predicted molecular weight ~51 kDa.



Flow Cytometry

Image 3. GATA2 antibody flow cytometric analysis of 293 cells (green) compared to a [negative control](#) (blue). FITC-conjugated goat-anti-rabbit secondary Ab was used for the analysis.