

Datasheet for ABIN3031039  
**anti-GLI2 antibody (C-Term)**[Go to Product page](#)

## 5 Images

## Overview

Quantity:	0.4 mL
Target:	GLI2
Binding Specificity:	C-Term
Reactivity:	Human
Host:	Rabbit
Clonality:	Polyclonal
Conjugate:	This GLI2 antibody is un-conjugated
Application:	Western Blotting (WB), ELISA, Immunofluorescence (IF), Flow Cytometry (FACS)

## Product Details

Immunogen:	This GLI2 antibody was produced from a rabbit immunized with a KLH conjugated synthetic peptide between 1287-1321 amino acids from the C-terminal region of human GLI2.
Isotype:	Ig Fraction
Purification:	Antigen affinity purified

## Target Details

Target:	GLI2
Alternative Name:	GLI2 ( <a href="#">GLI2 Products</a> )
Background:	Acts as a transcriptional activator. May play a role during embryogenesis. Binds to the DNA sequence 5'-GAACCACCCA-3' which is part of the TRE-2S regulatory element that augments the Tax-dependent enhancer of human T-cell leukemia virus type 1. Is involved in the

## Target Details

---

smoothened (SHH) signaling pathway.

UniProt: [P10070](#)

Pathways: [Hedgehog Signaling](#), [Dopaminergic Neurogenesis](#)

## Application Details

---

Application Notes: Titration of the GLI2 antibody may be required due to differences in protocols and secondary/substrate sensitivity.

1. GLI-2 exists as five alternatively spliced isoforms of 133 kDa (isoform 1), 132 (2), 88 (3), 86 (4) and 168 kDa (isoform 5).\ Immunofluorescence: 1:25,Flow Cytometry: 1:25,Western blot: 1:1000

Restrictions: For Research Use only

## Handling

---

Format: Liquid

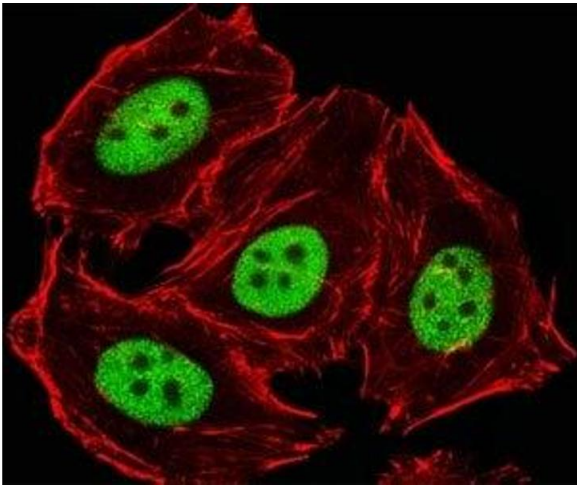
Buffer: In 1X PBS, pH 7.4, with 0.09 % sodium azide

Preservative: Sodium azide

Precaution of Use: This product contains Sodium azide: a POISONOUS AND HAZARDOUS SUBSTANCE which should be handled by trained staff only.

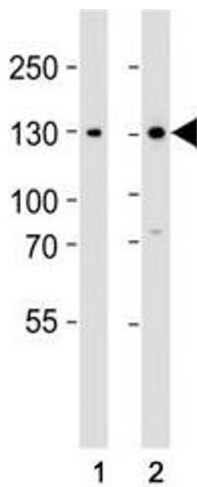
Storage: -20 °C

Storage Comment: Aliquot the GLI2 antibody and store frozen at -20°C or colder. Avoid repeated freeze-thaw cycles.



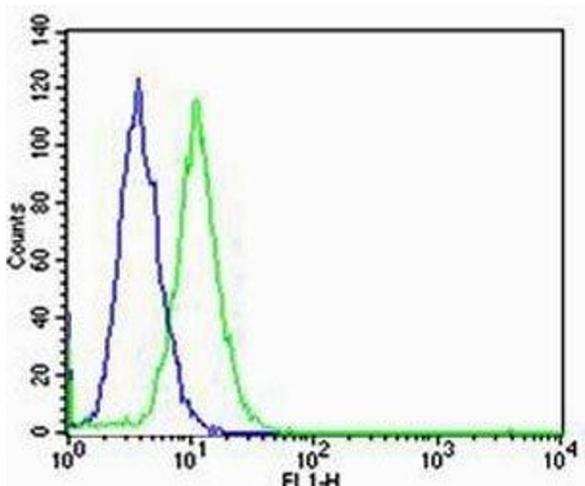
### Immunofluorescence

**Image 1.** Fluorescent image of HeLa cells stained with GLI2 antibody diluted at 1:25 dilution. An Alexa Fluor 488-conjugated goat anti-rabbit IgG was used as the secondary Ab (green). Cytoplasmic actin was counterstained with Alexa Fluor 555 conjugated with Phalloidin



### Western Blotting

**Image 2.** Western blot analysis of lysate from (1) 293 and (2) Jurkat cell line using GLI2 antibody at 1:1000. Predicted molecular weight: 86~168 kDa (multiple isoforms)(1).



### Flow Cytometry

**Image 3.** Flow cytometric analysis of HeLa cells using GLI2 antibody (green) compared to an isotype control of rabbit IgG (blue). Ab diluted at 1:25 dilution. An Alexa Fluor 488 goat anti-rabbit IgG was used as the

Please check the [product details page](#) for more images. Overall 5 images are available for ABIN3031039.