

Datasheet for ABIN3031041
anti-GLI3 antibody (N-Term)[Go to Product page](#)

2 Images

Overview

Quantity:	100 µg
Target:	GLI3
Binding Specificity:	N-Term
Reactivity:	Human, Mouse, Rat
Host:	Rabbit
Clonality:	Polyclonal
Conjugate:	This GLI3 antibody is un-conjugated
Application:	Western Blotting (WB)

Product Details

Immunogen:	An amino acid sequence from the N-terminus of human Gli-kruppel family member 3 (SNEDESPGQTYHRERRNA) was used as the immunogen for this Gli3 antibody.
Isotype:	IgG
Purification:	Antigen affinity

Target Details

Target:	GLI3
Alternative Name:	GLI3 (GLI3 Products)
Background:	Gli-kruppel family member 3 is a member of the zinc finger family related to Kruppel, a protein family that is known to regulate development in Drosophila. The gene is expressed as an 8.5-kb mRNA in tissues such as testis, myometrium, placenta, and lung, and the protein product

Target Details

(relative molecular mass, 190,000D) shows sequence-specific DNA binding. Gli3 is homologous to the *Drosophila cubitus interruptus (ci)* gene product(Ci), which regulates the Patched (pct), Gooseberry (gsb), and Decapentaplegic (dpp) genes. PKA-dependent processing of vertebrate Gli3 in developing limb generates a potent repressor in a manner antagonized by apparent long-range signaling from posteriorly localized Sonic hedgehog protein. The high relative abundance and potency of Gli3 repressor suggested specialization of the protein and its products for negative hedgehog pathway regulation.

UniProt: [P10071](#)

Pathways: [Hedgehog Signaling](#)

Application Details

Application Notes: The stated application concentrations are suggested starting amounts. Titration of the Gli3 antibody may be required due to differences in protocols and secondary/substrate sensitivity.

1. There are two isoforms of Gli-kruppel family member 3: the 170-190KD full length form and a truncated ~80KD form. This antibody will detect both, depending on the testing material.\.

Western blot: 0.5-1 µg/mL (1)

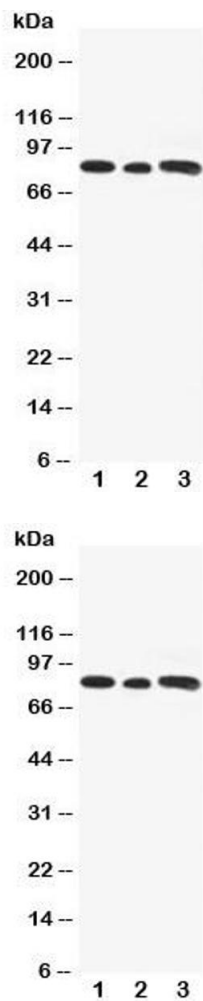
Restrictions: For Research Use only

Handling

Buffer: 0.5 mg/mL if reconstituted with 0.2 mL sterile DI water

Storage: -20 °C

Storage Comment: After reconstitution, the Gli3 antibody can be stored for up to one month at 4°C. For long-term, aliquot and store at -20°C. Avoid repeated freezing and thawing.



Western Blotting

Image 1. Western blot testing of Gli3 antibody and Lane 1: rat testis; 2: human A549; 3: (h) SW620 cell lysate

Western Blotting

Image 2. Western blot testing of Gli3 antibody and Lane 1: rat testis