

Datasheet for ABIN3031042
anti-GDNF antibody (AA 8-36)

5 Images

[Go to Product page](#)

Overview

Quantity:	0.4 mL
Target:	GDNF
Binding Specificity:	AA 8-36
Reactivity:	Human, Mouse
Host:	Rabbit
Clonality:	Polyclonal
Conjugate:	This GDNF antibody is un-conjugated
Application:	Western Blotting (WB), Immunohistochemistry (IHC), ELISA, Flow Cytometry (FACS)

Product Details

Immunogen:	A portion of amino acids 8-36 from the human protein was used as the immunogen for this GDNF antibody.
Isotype:	Ig Fraction
Purification:	Antigen affinity purified

Target Details

Target:	GDNF
Alternative Name:	GDNF (GDNF Products)
Background:	GDNF is a highly conserved neurotrophic factor. The recombinant form of this protein was shown to promote the survival and differentiation of dopaminergic neurons in culture, and was able to prevent apoptosis of motor neurons induced by axotomy. This protein is processed to a

Target Details

mature secreted form that exists as a homodimer. The mature form of the protein is a ligand for the product of the RET (rearranged during transfection) protooncogene. In addition to the transcript encoding GDNF, two additional alternative transcripts encoding distinct proteins, referred to as astrocyte-derived trophic factors, have also been described.

UniProt: [P39905](#)

Pathways: [RTK Signaling](#), [Synaptic Membrane](#), [Tube Formation](#), [Autophagy](#), [Smooth Muscle Cell Migration](#)

Application Details

Application Notes: Titration of the GDNF antibody may be required due to differences in protocols and secondary/substrate sensitivity.\. Western blot: 1:1000,IHC (Paraffin): 1:10-1:50,Flow Cytometry: 1:10-1:50

Restrictions: For Research Use only

Handling

Format: Liquid

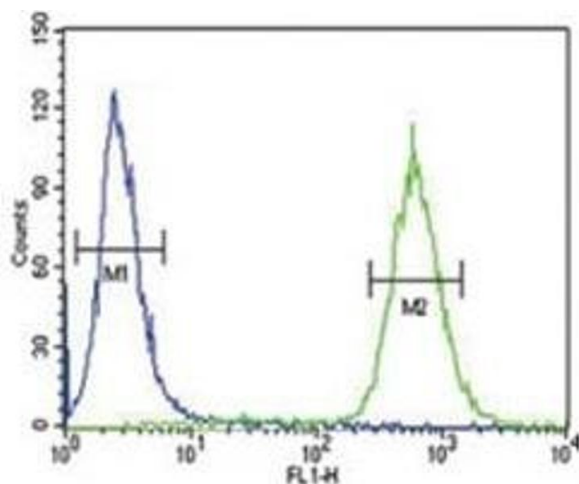
Buffer: In 1X PBS, pH 7.4, with 0.09 % sodium azide

Preservative: Sodium azide

Precaution of Use: This product contains Sodium azide: a POISONOUS AND HAZARDOUS SUBSTANCE which should be handled by trained staff only.

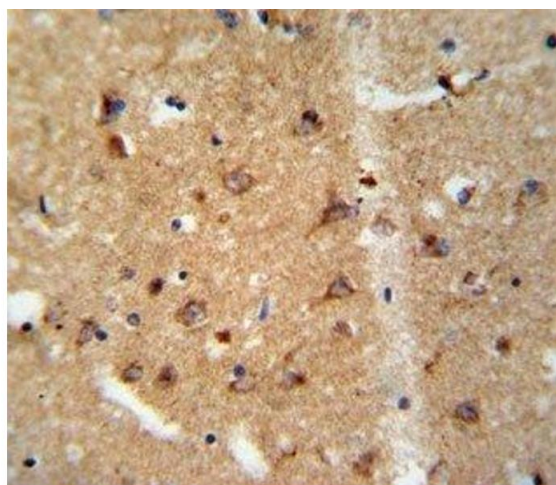
Storage: -20 °C

Storage Comment: Aliquot the GDNF antibody and store frozen at -20°C or colder. Avoid repeated freeze-thaw cycles.



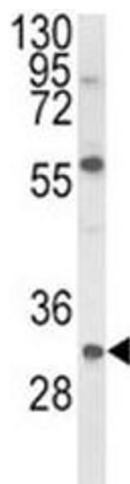
Flow Cytometry

Image 1. GDNF antibody flow cytometric analysis of 293 cells (right histogram) compared to a negative control (left histogram). FITC-conjugated goat-anti-rabbit secondary Ab was used for the analysis.



Immunohistochemistry

Image 2. IHC analysis of FFPE human brain tissue stained with GDNF antibody



Western Blotting

Image 3. Western blot analysis of GDNF antibody and mouse NIH3T3 lysate.

Please check the [product details page](#) for more images. Overall 5 images are available for ABIN3031042.