

Datasheet for ABIN3031054  
**anti-GCNT2 antibody (AA 364-391)**[Go to Product page](#)

## 3 Images

## Overview

Quantity:	0.4 mL
Target:	GCNT2
Binding Specificity:	AA 364-391
Reactivity:	Human, Mouse
Host:	Rabbit
Clonality:	Polyclonal
Conjugate:	This GCNT2 antibody is un-conjugated
Application:	ELISA, Western Blotting (WB), Immunohistochemistry (IHC)

## Product Details

Immunogen:	A portion of amino acids 364-391 from the human protein was used as the immunogen for this GCNT2 antibody.
Isotype:	Ig Fraction
Purification:	Antigen affinity purified

## Target Details

Target:	GCNT2
Alternative Name:	GCNT2 ( <a href="#">GCNT2 Products</a> )
Background:	This gene encodes the enzyme responsible for formation of the blood group I antigen. The i and I antigens are distinguished by linear and branched poly-N-acetylactosaminoglycans, respectively. The encoded protein is the I-branching enzyme, a beta-1,6-N-

## Target Details

acetylglucosaminyltransferase responsible for the conversion of fetal i antigen to adult I antigen in erythrocytes during embryonic development. Mutations in this gene have been associated with adult i blood group phenotype. Alternatively spliced transcript variants encoding different isoforms have been described.

UniProt: [Q06430](#)

Pathways: [Glycosaminoglycan Metabolic Process](#)

## Application Details

Application Notes: Titration of the GCNT2 antibody may be required due to differences in protocols and secondary/substrate sensitivity.\. Western blot: 1:1000,IHC (Paraffin): 1:10-1:50

Restrictions: For Research Use only

## Handling

Format: Liquid

Buffer: In 1X PBS, pH 7.4, with 0.09 % sodium azide

Preservative: Sodium azide

Precaution of Use: This product contains Sodium azide: a POISONOUS AND HAZARDOUS SUBSTANCE which should be handled by trained staff only.

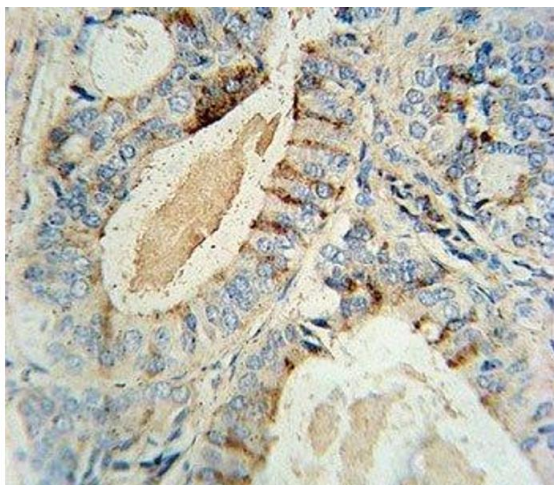
Storage: -20 °C

Storage Comment: Aliquot the GCNT2 antibody and store frozen at -20°C or colder. Avoid repeated freeze-thaw cycles.



#### Western Blotting

**Image 1.** GCNT2 antibody western blot analysis in mouse kidney tissue lysate



#### Immunohistochemistry

**Image 2.** GCNT2 antibody immunohistochemistry analysis in formalin fixed and paraffin embedded human prostate carcinoma.



#### Western Blotting

**Image 3.** GCNT2 antibody western blot analysis in mouse kidney tissue lysate