

Datasheet for ABIN3031076
anti-GCLC antibody (AA 1-30)[Go to Product page](#)

7 Images

Overview

Quantity:	0.4 mL
Target:	GCLC
Binding Specificity:	AA 1-30
Reactivity:	Human
Host:	Rabbit
Clonality:	Polyclonal
Conjugate:	This GCLC antibody is un-conjugated
Application:	Western Blotting (WB), Immunohistochemistry (IHC), ELISA, Immunofluorescence (IF), Flow Cytometry (FACS)

Product Details

Immunogen:	A portion of amino acids 1-30 from the human protein was used as the immunogen for this GCLC antibody.
Isotype:	Ig Fraction
Purification:	Antigen affinity purified

Target Details

Target:	GCLC
Alternative Name:	GCLC (GCLC Products)
Background:	Glutamate-cysteine ligase, also known as gamma-glutamylcysteine synthetase is the first rate-limiting enzyme of glutathione synthesis. The enzyme consists of two subunits, a heavy

Target Details

catalytic subunit and a light regulatory subunit. This locus encodes the catalytic subunit, while the regulatory subunit is derived from a different gene located on chromosome 1p22-p21. Mutations at this locus have been associated with hemolytic anemia due to deficiency of gamma-glutamylcysteine synthetase and susceptibility to myocardial infarction.

UniProt: [P48506](#)

Pathways: [Cell RedoxHomeostasis](#)

Application Details

Application Notes: Titration of the GCLC antibody may be required due to differences in protocols and secondary/substrate sensitivity.\. Western blot: 1:1000,IHC (Paraffin): 1:10-1:50,Immunofluorescence: 1:10-1:50,Flow Cytometry: 1:10-1:50

Restrictions: For Research Use only

Handling

Format: Liquid

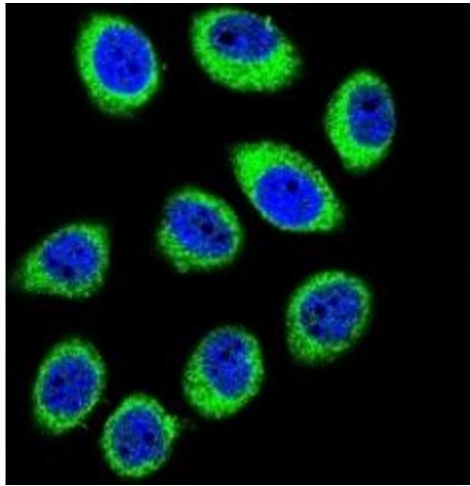
Buffer: In 1X PBS, pH 7.4, with 0.09 % sodium azide

Preservative: Sodium azide

Precaution of Use: This product contains Sodium azide: a POISONOUS AND HAZARDOUS SUBSTANCE which should be handled by trained staff only.

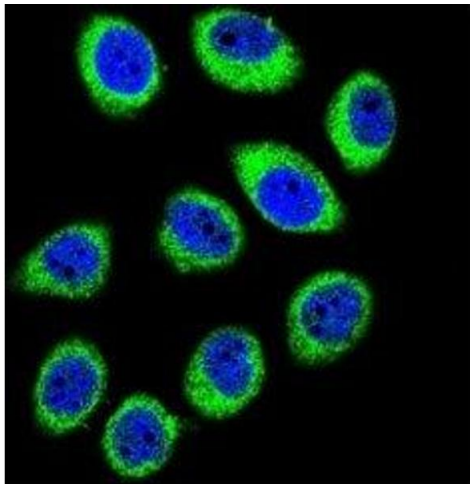
Storage: -20 °C

Storage Comment: Aliquot the GCLC antibody and store frozen at -20°C or colder. Avoid repeated freeze-thaw cycles.



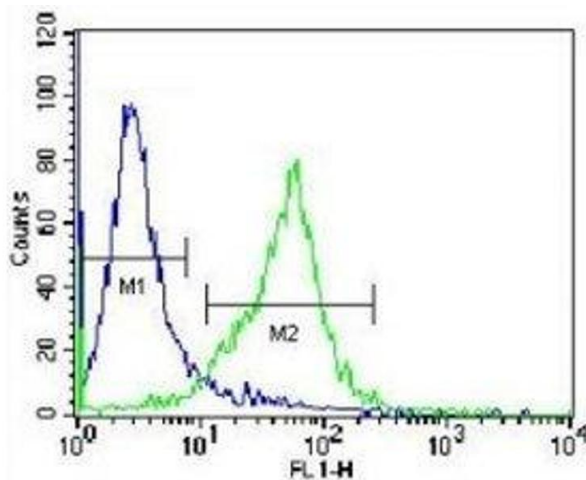
Immunofluorescence

Image 1. Confocal immunofluorescent analysis of GCLC antibody with U-251MG cells followed by Alexa Fluor 488-conjugated goat anti-rabbit IgG (green). DAPI was used as a nuclear counterstain (blue).



Immunofluorescence

Image 2. Confocal immunofluorescent analysis of GCLC antibody with U-251MG cells followed by Alexa Fluor 488-conjugated goat anti-rabbit IgG (green). DAPI was used as a nuclear counterstain (blue).



Flow Cytometry

Image 3. GCLC antibody flow cytometric analysis of Jurkat cells (green) compared to a negative control (blue). FITC-conjugated donkey-anti-rabbit secondary Ab was used for the analysis.

Please check the [product details page](#) for more images. Overall 7 images are available for ABIN3031076.