

Datasheet for ABIN3031080

**anti-Glutaredoxin 2 antibody (Middle Region)****3** Images[Go to Product page](#)

## Overview

Quantity:	100 µg
Target:	Glutaredoxin 2 (GRX2)
Binding Specificity:	Middle Region
Reactivity:	Human, Rat, Mouse
Host:	Rabbit
Clonality:	Polyclonal
Conjugate:	This Glutaredoxin 2 antibody is un-conjugated
Application:	Western Blotting (WB), Immunohistochemistry (Paraffin-embedded Sections) (IHC (p))

## Product Details

Immunogen:	An amino acid sequence from the middle region of human GLRX2 (EYGNQFQDALYKMTGER) was used as the immunogen for this Glutaredoxin 2 antibody.
Isotype:	IgG
Purification:	Antigen affinity

## Target Details

Target:	Glutaredoxin 2 (GRX2)
Alternative Name:	Glutaredoxin 2 ( <a href="#">GRX2 Products</a> )
Background:	Glutaredoxin-2 also known as GLRX2 and GRX2, is a protein that in humans is encoded by the GLRX2 gene. Glutaredoxins are a family of glutathione-dependent hydrogen donors that participate in a variety of cellular redox reactions. By sequence analysis, Lundberg et al.(2001)

## Target Details

and Gladyshev et al.(2001) identified the GLRX2 gene within a clone mapping to chromosome 1q31.2-q31.3. Lundberg et al.(2001) determined that the gene contains 5 exons spanning about 9.6 kb. The GLRX2B transcript uses a first exon(exon 1B) located upstream from the first exon used by the GLRX2A transcript(exon 1A), suggesting that alternative splicing generates the isoforms. Lundberg et al.(2001)assayed reductase activity in recombinant proteins of both GLRX2 isoforms. They found that both have GSH-dependent dehydroascorbate reductase activity and 2-hydroxyethyl disulfide reductase activity.

UniProt: [Q9NS18](#)

Pathways: [Cell RedoxHomeostasis](#)

## Application Details

Application Notes: The stated application concentrations are suggested starting amounts. Titration of the Glutaredoxin 2 antibody may be required due to differences in protocols and secondary/substrate sensitivity.\. Western blot: 0.5-1 µg/mL,IHC (Paraffin): 0.5-1 µg/mL

Restrictions: For Research Use only

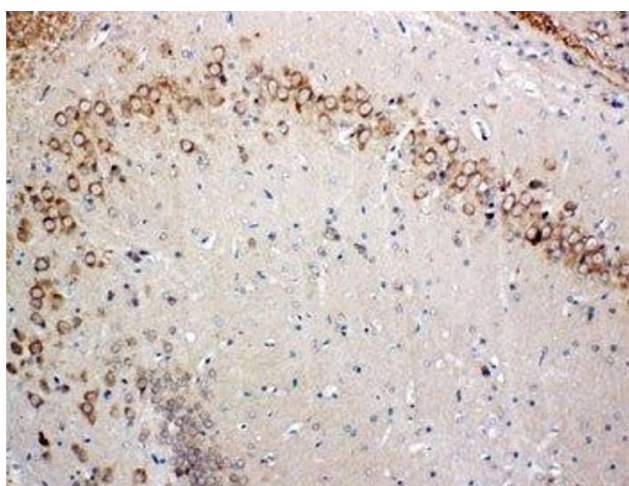
## Handling

Buffer: 0.5 mg/mL if reconstituted with 0.2 mL sterile DI water

Storage: -20 °C

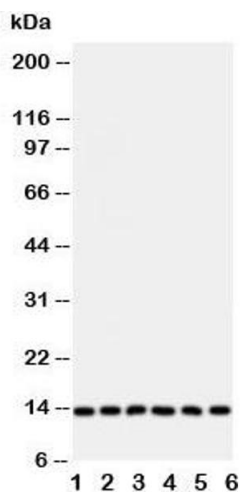
Storage Comment: After reconstitution, the Glutaredoxin 2 antibody can be stored for up to one month at 4°C. For long-term, aliquot and store at -20°C. Avoid repeated freezing and thawing.

## Images



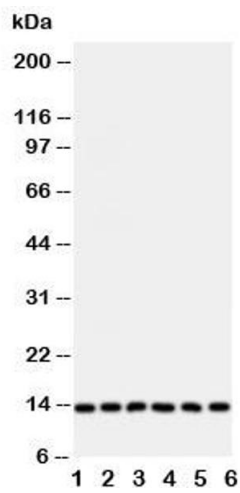
### Immunohistochemistry

**Image 1.** IHC-P: Glutaredoxin 2 antibody testing of rat brain tissue



Western Blotting

**Image 2.** Western blot testing of Glutaredoxin 2 antibody and Lane 1: rat testis; and human samples 2: HeLa; 3: U87; 4: NEU; 5: Jurkat; 6: MCF-7 cell lysate



Western Blotting

**Image 3.** Western blot testing of Glutaredoxin 2 antibody and Lane 1: rat testis