

Datasheet for ABIN3031093  
**anti-GK2 antibody (AA 487-515)**[Go to Product page](#)

## 3 Images

## Overview

Quantity:	0.4 mL
Target:	GK2
Binding Specificity:	AA 487-515
Reactivity:	Human
Host:	Rabbit
Clonality:	Polyclonal
Conjugate:	This GK2 antibody is un-conjugated
Application:	Western Blotting (WB), ELISA, Immunohistochemistry (IHC)

## Product Details

Immunogen:	A portion of amino acids 487-515 from the human protein was used as the immunogen for this Glycerol kinase 2 antibody.
Isotype:	Ig Fraction
Cross-Reactivity (Details):	Expected species reactivity: Bovine, Primate
Purification:	Purified

## Target Details

Target:	GK2
Abstract:	<a href="#">GK2 Products</a>
Background:	The human glycerol kinase gene family consists of at least 3 expressed loci. The GK1 locus on

## Target Details

Xp21.3 is the site of mutations (deletions) causing glycerol kinase deficiency. It comprises 19 exons and is probably ancestral to several other genes which, because they are intronless, are suspected of having arisen by reverse transcriptase mediated events. These include 2 genes on chromosome 4. They are expressed as a single mRNA species in testis where expression is at a high level.

UniProt: [Q14410](#)

## Application Details

Application Notes: Titration of the Glycerol kinase 2 antibody may be required due to differences in protocols and secondary/substrate sensitivity.\. Western blot: 1:1000,IHC (Paraffin): 1:50-1:100

Restrictions: For Research Use only

## Handling

Format: Liquid

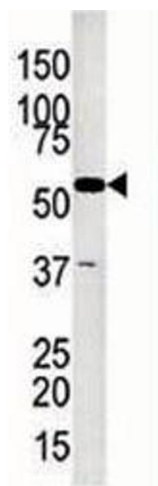
Buffer: In 1X PBS pH 7.4 with 0.09 % sodium azide

Preservative: Sodium azide

Precaution of Use: This product contains Sodium azide: a POISONOUS AND HAZARDOUS SUBSTANCE which should be handled by trained staff only.

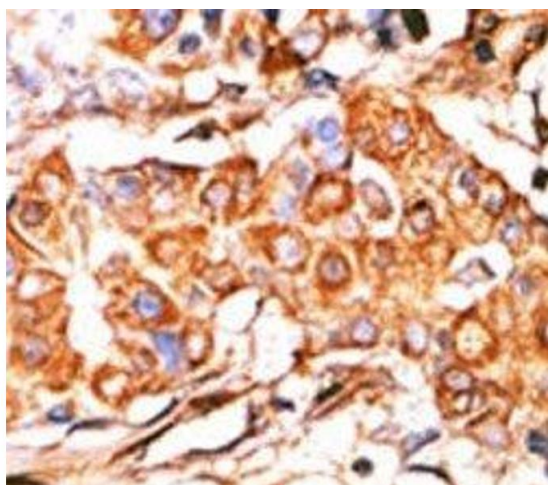
Storage: -20 °C

Storage Comment: Aliquot the Glycerol kinase 2 antibody and store frozen at -20°C or colder. Avoid repeated freeze-thaw cycles.



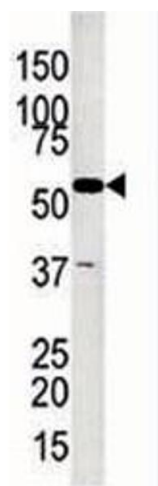
#### Western Blotting

**Image 1.** Glycerol kinase antibody used in western blot to detect GKP2 in Jurkat lysate



#### Immunohistochemistry

**Image 2.** IHC analysis of FFPE human breast carcinoma stained with the Glycerol kinase antibody



#### Western Blotting

**Image 3.** Glycerol kinase antibody used in western blot to detect GK2 in Jurkat lysate