



[Go to Product page](#)

Datasheet for ABIN3031098

## anti-Glypican 3 antibody (AA 21-50)

### 5 Images

#### Overview

|                      |  |
|----------------------|--|
| Quantity:            | 0.4 mL   |
| Target:              | Glypican 3 (GPC3)  |
| Binding Specificity: | AA 21-50   |
| Reactivity:          | Human, Mouse   |
| Host:                | Rabbit   |
| Clonality:           | Polyclonal   |
| Conjugate:           | This Glypican 3 antibody is un-conjugated                |
| Application:         | Western Blotting (WB), Immunohistochemistry (IHC), ELISA |

#### Product Details

|               |   |
|---------------|---|
| Immunogen:    | A portion of amino acids 21-50 from the human protein was used as the immunogen for this Glypican 3 antibody. |
| Isotype:      | Ig Fraction   |
| Purification: | Purified  |

#### Target Details

|                   |   |
|-------------------|---|
| Target:           | Glypican 3 (GPC3)   |
| Alternative Name: | Glypican 3 ( <a href="#">GPC3 Products</a> )  |
| Background:       | GPC3 is a cell surface proteoglycan that bears heparan sulfate. This protein may be involved in the suppression/modulation of growth in the predominantly mesodermal tissues and organs, and may play a role in the modulation of IGF2 interactions with its receptor and thereby |

## Target Details

---

modulate its function. Members of the glypican-related integral membrane proteoglycan family contain a core protein anchored to the cytoplasmic membrane via a glycosyl phosphatidylinositol (GPI) linkage. These proteins may play a role in the control of cell division, growth regulation, and tumor predisposition. Deletion mutations in GPC3 are the cause of Simpson-Golabi-Behmel syndrome (SGBS), also known as Simpson dysmorphia syndrome (SDYS). SGBS is a condition characterized by pre- and postnatal overgrowth (gigantism) with visceral and skeletal anomalies.

---

UniProt: [P51654](#)

---

Pathways: [Glycosaminoglycan Metabolic Process](#)

## Application Details

---

---

Application Notes: Titration of the Glypican 3 antibody may be required due to differences in protocols and secondary/substrate sensitivity.\. Western blot: 1:1000,IHC (Paraffin): 1:50-1:100

---

Restrictions: For Research Use only

## Handling

---

---

Format: Liquid

---

Buffer: In 1X PBS, pH 7.4, with 0.09 % sodium azide

---

Preservative: Sodium azide

---

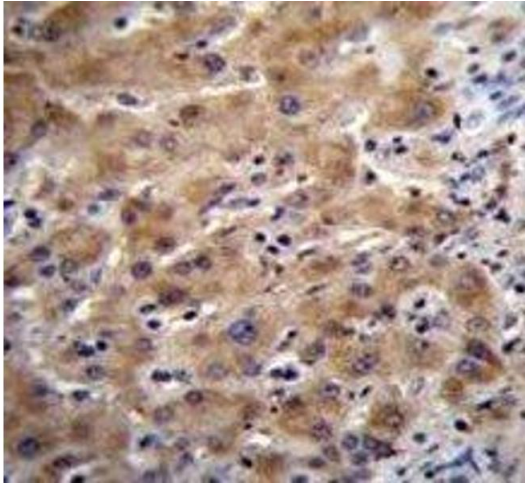
Precaution of Use: This product contains Sodium azide: a POISONOUS AND HAZARDOUS SUBSTANCE which should be handled by trained staff only.

---

Storage: -20 °C

---

Storage Comment: Aliquot the Glypican 3 antibody and store frozen at -20°C or colder. Avoid repeated freeze-thaw cycles.



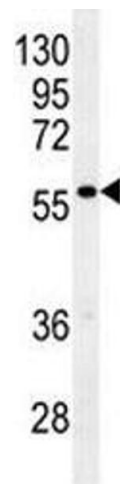
### Immunohistochemistry

**Image 1.** Glypican 3 antibody immunohistochemistry analysis in formalin fixed and paraffin embedded human liver tissue.



### Western Blotting

**Image 2.** Glypican 3 antibody western blot analysis in HepG2 lysate



### Western Blotting

**Image 3.** Glypican 3 antibody western blot analysis in mouse stomach tissue lysate

Please check the [product details page](#) for more images. Overall 5 images are available for ABIN3031098.