

Datasheet for ABIN3031099

anti-Glypican 3 antibody (AA 335-365)**4** Images[Go to Product page](#)

Overview

Quantity:	0.4 mL
Target:	Glypican 3 (GPC3)
Binding Specificity:	AA 335-365
Reactivity:	Human, Mouse
Host:	Rabbit
Clonality:	Polyclonal
Conjugate:	This Glypican 3 antibody is un-conjugated
Application:	Immunofluorescence (IF), Western Blotting (WB), ELISA

Product Details

Immunogen:	A portion of amino acids 335-365 from the human protein was used as the immunogen for this Glypican 3 antibody.
Isotype:	Ig Fraction
Purification:	Purified

Target Details

Target:	Glypican 3 (GPC3)
Alternative Name:	Glypican 3 (GPC3 Products)
Background:	Cell surface proteoglycan that bears heparan sulfate. Inhibits the dipeptidyl peptidase activity of DPP4. May be involved in the suppression/modulation of growth in the predominantly mesodermal tissues and organs. May play a role in the modulation of IGF2 interactions with its

Target Details

receptor and thereby modulate its function. May regulate growth and tumor predisposition.
[UniProt]

UniProt: [P51654](#)

Pathways: [Glycosaminoglycan Metabolic Process](#)

Application Details

Application Notes: Titration of the Glypican 3 antibody may be required due to differences in protocols and secondary/substrate sensitivity.\. Immunofluorescence: Tested,Western blot: 1:1000

Restrictions: For Research Use only

Handling

Format: Liquid

Buffer: In 1X PBS, pH 7.4, with 0.09 % sodium azide

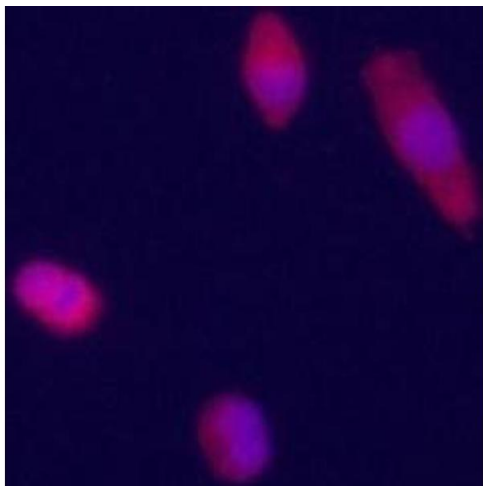
Preservative: Sodium azide

Precaution of Use: This product contains Sodium azide: a POISONOUS AND HAZARDOUS SUBSTANCE which should be handled by trained staff only.

Storage: -20 °C

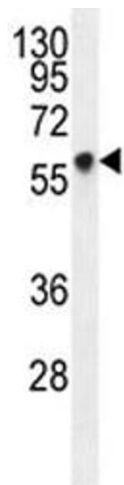
Storage Comment: Aliquot the Glypican 3 antibody and store frozen at -20°C or colder. Avoid repeated freeze-thaw cycles.

Images



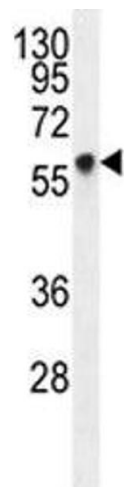
Immunofluorescence

Image 1. Immunofluorescence staining of Glypican 3 antibody on HepG2 cells. The cells were acetone fixated. Ab dilution of 1:50. Original magnification 1:400. (Courtesy of Dr. Mariana Dabeva, Department of Medicine, Albert Einstein College of Medicine)



Western Blotting

Image 2. Glypican 3 antibody western blot analysis in HepG2 lysate



Western Blotting

Image 3. Glypican 3 antibody western blot analysis in HepG2 lysate

Please check the [product details page](#) for more images. Overall 4 images are available for ABIN3031099.