

Datasheet for ABIN3031109
anti-GDF11 antibody (AA 32-61)

5 Images

[Go to Product page](#)

Overview

Quantity:	0.4 mL
Target:	GDF11
Binding Specificity:	AA 32-61
Reactivity:	Human
Host:	Rabbit
Clonality:	Polyclonal
Conjugate:	This GDF11 antibody is un-conjugated
Application:	Western Blotting (WB), Immunohistochemistry (IHC), ELISA

Product Details

Immunogen:	A portion of amino acids 32-61 from the human protein was used as the immunogen for this GDF11 antibody.
Isotype:	Ig Fraction
Purification:	Purified

Target Details

Target:	GDF11
Alternative Name:	GDF11 (GDF11 Products)
Background:	GDF11 is a member of the bone morphogenetic protein (BMP) family and the TGF-beta superfamily. This group of proteins is characterized by a polybasic proteolytic processing site which is cleaved to produce a mature protein containing seven conserved cysteine residues.

Target Details

The members of this family are regulators of cell growth and differentiation in both embryonic and adult tissues. Studies in mice and *Xenopus* suggest that this protein is involved in mesodermal formation and neurogenesis during embryonic development.

UniProt: [O95390](#)

Application Details

Application Notes: Titration of the GDF11 antibody may be required due to differences in protocols and secondary/substrate sensitivity.\. Western blot: 1:1000,IHC (Paraffin): 1:10-1:50

Restrictions: For Research Use only

Handling

Format: Liquid

Buffer: In 1X PBS, pH 7.4, with 0.09 % sodium azide

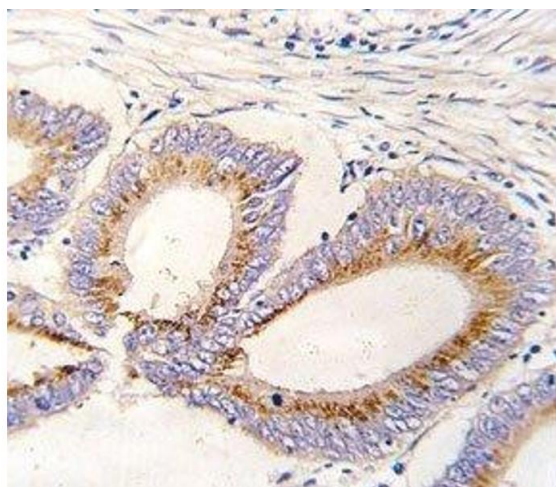
Preservative: Sodium azide

Precaution of Use: This product contains Sodium azide: a POISONOUS AND HAZARDOUS SUBSTANCE which should be handled by trained staff only.

Storage: -20 °C

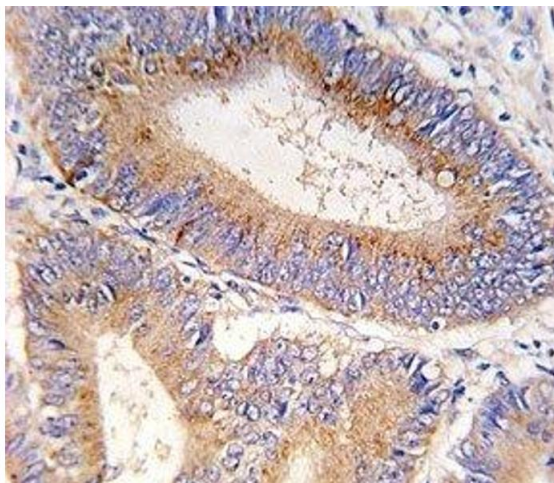
Storage Comment: Aliquot the GDF11 antibody and store frozen at -20°C or colder. Avoid repeated freeze-thaw cycles.

Images



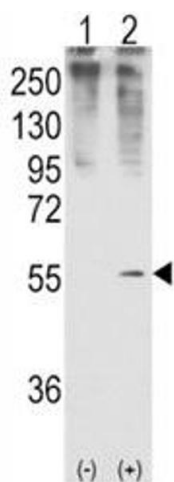
Immunohistochemistry

Image 1. IHC analysis of FFPE human colon carcinoma tissue stained with GDF11 antibody



Immunohistochemistry

Image 2. IHC analysis of FFPE human colon carcinoma tissue stained with GDF11 antibody



Western Blotting

Image 3. Western blot analysis of GDF11 antibody and 293 cell lysate (2 ug/lane) either nontransfected (Lane 1) or transiently transfected with the GDF11 gene (2).

Please check the [product details page](#) for more images. Overall 5 images are available for ABIN3031109.