

Datasheet for ABIN3031110  
**anti-GDF15 antibody (AA 51-79)**

## 5 Images

[Go to Product page](#)

## Overview

Quantity:	0.4 mL
Target:	GDF15
Binding Specificity:	AA 51-79
Reactivity:	Human
Host:	Rabbit
Clonality:	Polyclonal
Conjugate:	This GDF15 antibody is un-conjugated
Application:	Western Blotting (WB), ELISA, Immunohistochemistry (IHC), Flow Cytometry (FACS)

## Product Details

Immunogen:	A portion of amino acids 51-79 from the human protein was used as the immunogen for this GDF15 antibody.
Isotype:	Ig Fraction
Purification:	Antigen affinity purified

## Target Details

Target:	GDF15
Alternative Name:	GDF15 ( <a href="#">GDF15 Products</a> )
Background:	Bone morphogenetic proteins are members of the transforming growth factor-beta superfamily and regulate tissue differentiation and maintenance. They are synthesized as precursor molecules that are processed at a dibasic cleavage site to release C-terminal domains

## Target Details

containing a characteristic motif of 7 conserved cysteines in the mature protein.

UniProt: [Q99988](#)

Pathways: [SARS-CoV-2 Protein Interactome](#)

## Application Details

Application Notes: Titration of the GDF15 antibody may be required due to differences in protocols and secondary/substrate sensitivity.\. Western blot: 1:1000,IHC (Paraffin): 1:10-1:50,Flow Cytometry: 1:10-1:50

Restrictions: For Research Use only

## Handling

Format: Liquid

Buffer: In 1X PBS, pH 7.4, with 0.09 % sodium azide

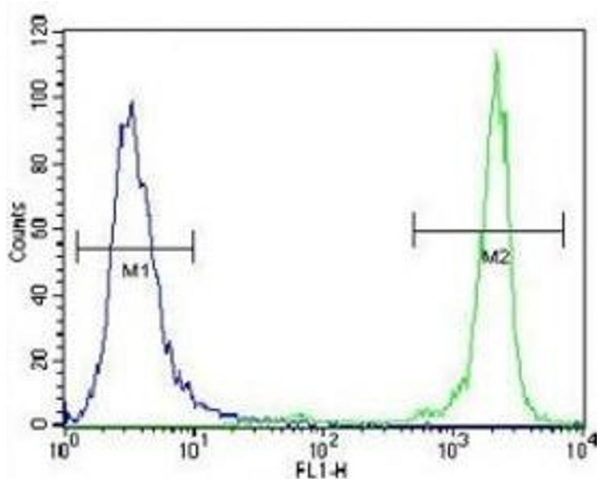
Preservative: Sodium azide

Precaution of Use: This product contains Sodium azide: a POISONOUS AND HAZARDOUS SUBSTANCE which should be handled by trained staff only.

Storage: -20 °C

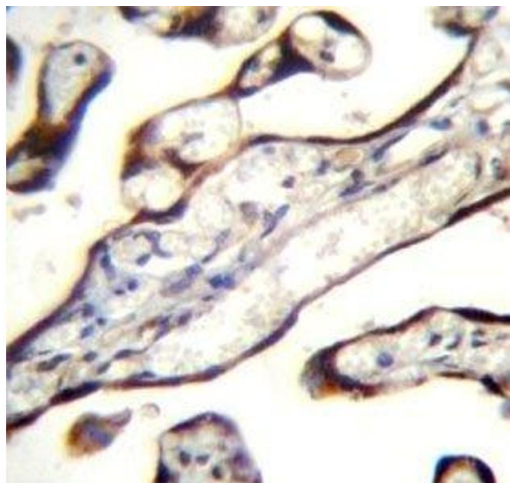
Storage Comment: Aliquot the GDF15 antibody and store frozen at -20°C or colder. Avoid repeated freeze-thaw cycles.

## Images



### Flow Cytometry

**Image 1.** GDF15 antibody flow cytometric analysis of NCI-H460 cells (green) compared to a negative control (blue). FITC-conjugated goat-anti-rabbit secondary Ab was used for the analysis.



#### Immunohistochemistry

**Image 2.** GDF15 antibody immunohistochemistry analysis in formalin fixed and paraffin embedded human placenta tissue.



#### Western Blotting

**Image 3.** GDF15 antibody western blot analysis in NCI-H460 lysate

Please check the [product details page](#) for more images. Overall 5 images are available for ABIN3031110.