



Datasheet for ABIN3031112
anti-GRB2 antibody (AA 187-216)



[Go to Product page](#)

3 Images

Overview

Quantity:	0.4 mL
Target:	GRB2
Binding Specificity:	AA 187-216
Reactivity:	Human
Host:	Rabbit
Clonality:	Polyclonal
Conjugate:	This GRB2 antibody is un-conjugated
Application:	Western Blotting (WB), ELISA, Immunohistochemistry (IHC)

Product Details

Immunogen:	A portion of amino acids 187-216 from the human protein was used as the immunogen for this GRB2 antibody.
Isotype:	Ig Fraction
Cross-Reactivity (Details):	Expected species reactivity: Mouse, Rat, Chicken, Xenopus
Purification:	Antigen affinity purified

Target Details

Target:	GRB2
Alternative Name:	GRB2 (GRB2 Products)
Background:	GRB2 binds the epidermal growth factor receptor and contains one SH2 domain and two SH3

Target Details

domains. Its two SH3 domains direct complex formation with proline-rich regions of other proteins, and its SH2 domain binds tyrosine phosphorylated sequences. This gene is similar to the Sem5 gene of *C.elegans*, which is involved in the signal transduction pathway.

UniProt: [P62993](#)

Pathways: [RTK Signaling](#), [TCR Signaling](#), [Fc-epsilon Receptor Signaling Pathway](#), [EGFR Signaling Pathway](#), [Neurotrophin Signaling Pathway](#), [Regulation of Actin Filament Polymerization](#), [Hepatitis C, Signaling Events mediated by VEGFR1 and VEGFR2](#), [Signaling of Hepatocyte Growth Factor Receptor](#), [EGFR Downregulation](#)

Application Details

Application Notes: Titration of the GRB2 antibody may be required due to differences in protocols and secondary/substrate sensitivity.\. Western blot: 1:1000,IHC (Paraffin): 1:10-1:50

Restrictions: For Research Use only

Handling

Format: Liquid

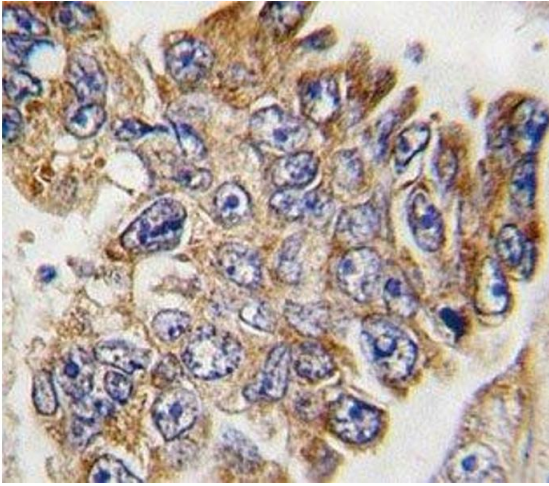
Buffer: In 1X PBS, pH 7.4, with 0.09 % sodium azide

Preservative: Sodium azide

Precaution of Use: This product contains Sodium azide: a POISONOUS AND HAZARDOUS SUBSTANCE which should be handled by trained staff only.

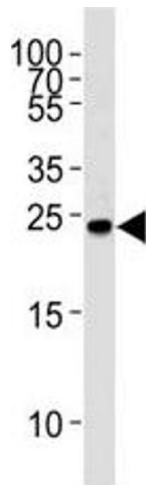
Storage: -20 °C

Storage Comment: Aliquot the GRB2 antibody and store frozen at -20°C or colder. Avoid repeated freeze-thaw cycles.



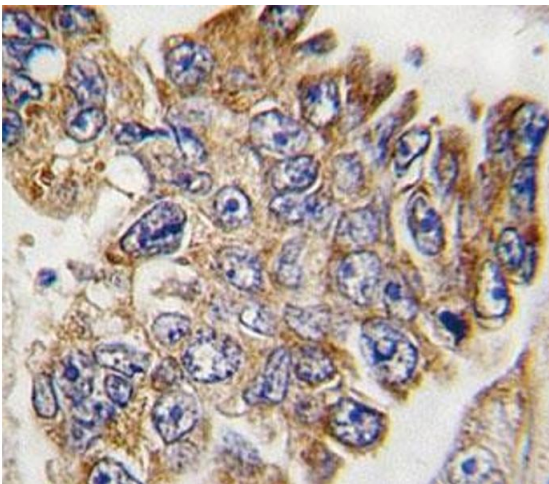
Immunohistochemistry

Image 1. IHC analysis of FFPE human lung carcinoma tissue stained with GRB2 antibody



Western Blotting

Image 2. Western blot analysis of lysate from Ramos cell line using GRB2 antibody at 1:1000.



Immunohistochemistry

Image 3. IHC analysis of FFPE human lung carcinoma tissue stained with GRB2 antibody