



Datasheet for ABIN3031114  
**anti-GRB2 antibody (AA 89-118)**



[Go to Product page](#)

5 Images

Overview

Quantity:	0.4 mL
Target:	GRB2
Binding Specificity:	AA 89-118
Reactivity:	Human
Host:	Rabbit
Clonality:	Polyclonal
Conjugate:	This GRB2 antibody is un-conjugated
Application:	Western Blotting (WB), ELISA, Immunohistochemistry (IHC)

Product Details

Immunogen:	A portion of amino acids 89-118 from the human protein was used as the immunogen for this GRB2 antibody.
Isotype:	Ig Fraction
Cross-Reactivity (Details):	Expected species reactivity: Mouse, Rat, Xenopus
Purification:	Purified

Target Details

Target:	GRB2
Alternative Name:	<a href="#">GRB2 (GRB2 Products)</a>
Background:	GRB2 is an adapter protein that provides a critical link between cell surface growth factor

## Target Details

---

receptors and the Ras signaling pathway. Isoform 2 does not bind to phosphorylated epidermal growth factor receptor (EGFR) but inhibits EGF-induced transactivation of a RAS-responsive element. Isoform 2 acts as a dominant negative protein over GRB2 and by suppressing proliferative signals, may trigger active programmed cell death. [UniProt]

UniProt: [P62993](#)

Pathways: [RTK Signaling](#), [TCR Signaling](#), [Fc-epsilon Receptor Signaling Pathway](#), [EGFR Signaling Pathway](#), [Neurotrophin Signaling Pathway](#), [Regulation of Actin Filament Polymerization](#), [Hepatitis C, Signaling Events mediated by VEGFR1 and VEGFR2](#), [Signaling of Hepatocyte Growth Factor Receptor](#), [EGFR Downregulation](#)

## Application Details

---

Application Notes: The stated application concentrations are suggested starting amounts. Titration of the GRB2 antibody may be required due to differences in protocols and secondary/substrate sensitivity.\. Western blot: 1:1000,IHC (Paraffin): 1:50-1:100

Restrictions: For Research Use only

## Handling

---

Format: Liquid

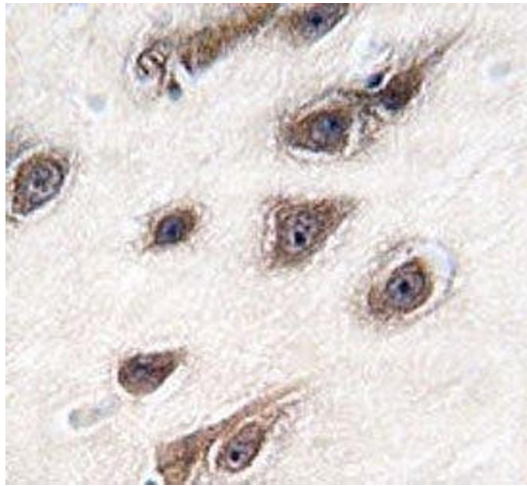
Buffer: In 1X PBS, pH 7.4, with 0.09 % sodium azide

Preservative: Sodium azide

Precaution of Use: This product contains Sodium azide: a POISONOUS AND HAZARDOUS SUBSTANCE which should be handled by trained staff only.

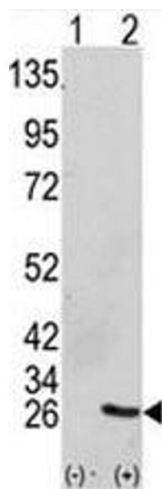
Storage: -20 °C

Storage Comment: Store at 4°C for up to one month. For long term, aliquot the GRB2 antibody and store frozen at -20°C or colder. Avoid repeated freeze-thaw cycles.



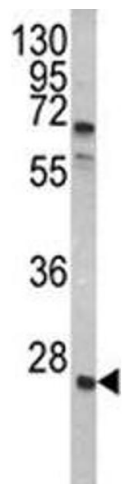
### Immunohistochemistry

**Image 1.** IHC analysis of FFPE human brain tissue stained with GRB2 antibody



### Western Blotting

**Image 2.** Western blot analysis of GRB2 antibody and 293 cell lysate (2 ug/lane) either nontransfected (Lane 1) or transiently transfected with the GRB2 gene (2).



### Western Blotting

**Image 3.** Western blot analysis of GRB2 antibody and A2058 lysate.

Please check the [product details page](#) for more images. Overall 5 images are available for ABIN3031114.