

Datasheet for ABIN3031119
anti-G3BP1 antibody (AA 401-430)

3 Images

[Go to Product page](#)

Overview

Quantity:	0.4 mL
Target:	G3BP1
Binding Specificity:	AA 401-430
Reactivity:	Human
Host:	Rabbit
Clonality:	Polyclonal
Conjugate:	This G3BP1 antibody is un-conjugated
Application:	Western Blotting (WB), Immunohistochemistry (IHC), ELISA

Product Details

Immunogen:	A portion of amino acids 401-430 from the human protein was used as the immunogen for this G3BP1 antibody.
Isotype:	Ig Fraction
Cross-Reactivity (Details):	Expected species reactivity: Mouse, Bovine
Purification:	Antigen affinity purified

Target Details

Target:	G3BP1
Alternative Name:	G3BP1 (G3BP1 Products)
Background:	This gene encodes one of the DNA-unwinding enzymes which prefers partially unwound 3'-

Target Details

tailed substrates and can also unwind partial RNA/DNA and RNA/RNA duplexes in an ATP-dependent fashion. This enzyme is a member of the heterogeneous nuclear RNA-binding proteins and is also an element of the Ras signal transduction pathway. It binds specifically to the Ras-GTPase-activating protein by associating with its SH3 domain. Several alternatively spliced transcript variants of this gene have been described, but the full-length nature of some of these variants has not been determined.

UniProt: [Q13283](#)

Pathways: [SARS-CoV-2 Protein Interactome](#)

Application Details

Application Notes: Titration of the G3BP1 antibody may be required due to differences in protocols and secondary/substrate sensitivity.\. Western blot: 1:1000,IHC (Paraffin): 1:10-1:50

Restrictions: For Research Use only

Handling

Format: Liquid

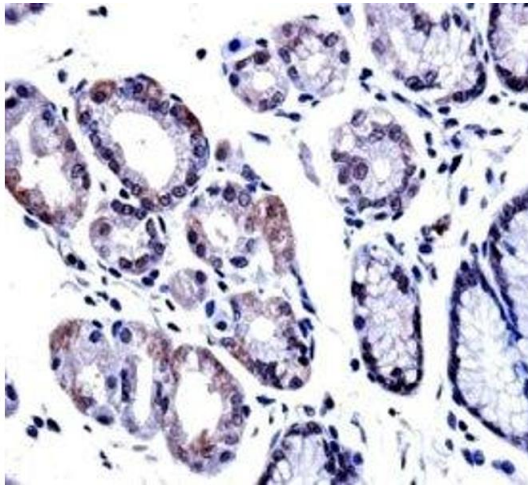
Buffer: In 1X PBS, pH 7.4, with 0.09 % sodium azide

Preservative: Sodium azide

Precaution of Use: This product contains Sodium azide: a POISONOUS AND HAZARDOUS SUBSTANCE which should be handled by trained staff only.

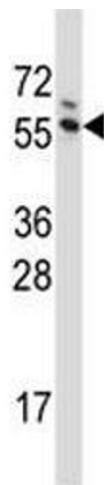
Storage: -20 °C

Storage Comment: Aliquot the G3BP1 antibody and store frozen at -20°C or colder. Avoid repeated freeze-thaw cycles.



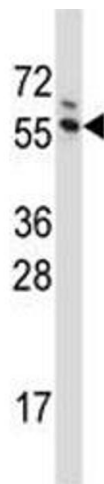
Immunohistochemistry

Image 1. G3BP1 antibody immunohistochemistry analysis in formalin fixed and paraffin embedded human stomach tissue.



Western Blotting

Image 2. G3BP1 antibody western blot analysis in Jurkat lysate



Western Blotting

Image 3. G3BP1 antibody western blot analysis in Jurkat lysate